

# Tobacco vs. electronic cigarettes: absence of harm reduction after six years of follow-up

M.E. FLACCO<sup>1</sup>, M. FIORE<sup>2</sup>, C. ACUTI MARTELLUCCI<sup>3</sup>, M. FERRANTE<sup>2</sup>, M.R. GUALANO<sup>4</sup>, G. LIGUORI<sup>5</sup>, F. BRAVI<sup>6</sup>, G.M. PIRONE<sup>7</sup>, C. MARZUILLO<sup>8</sup>, L. MANZOLI<sup>1,9</sup>

<sup>1</sup>Department of Medical Sciences, University of Ferrara, Ferrara, Italy

<sup>2</sup>Department "G.F. Ingrassia"- Hygiene and Public Health, University of Catania, Catania, Italy

<sup>3</sup>Department of Biomedical Sciences and Public Health, University of the Marche Region, Ancona, Italy

<sup>4</sup>Department of Public Health Sciences, University of Turin, Turin, Italy

<sup>5</sup>Department of Movement Sciences and Wellbeing, University Parthenope of Naples, Naples, Italy

<sup>6</sup>AcQuaRI Unit, "Sant'Anna" University Hospital of Ferrara, Ferrara, Italy

<sup>7</sup>Quality Evaluation Unit, University "Luigi Vanvitelli" of Naples, Naples, Italy

<sup>8</sup>Department of Public Health and Infectious Diseases, Sapienza University of Rome, Rome, Italy

<sup>9</sup>"University G. D'Annunzio" Foundation, Chieti, Italy

*Maria Elena and Maria Fiore equally contributed to the present study*

**Abstract. – OBJECTIVE:** Information on the long-term safety of electronic cigarettes (e-cig) is still limited. We report the results after six years of follow-up of the first observational study assessing e-cig long-term effectiveness and safety.

**PATIENTS AND METHODS:** Participants were adults who smoked  $\geq 1$  tobacco cigarette/day (tobacco smokers); or used any type of e-cig inhaling  $\geq 50$  puffs weekly (e-cig users); or used both (dual users). Participants were contacted directly or by phone and/or internet interviews. Hospital discharge abstract data and carbon monoxide level tests were also used.

**RESULTS:** Data were available for 228 e-cig users (all ex-smokers), 469 tobacco smokers, 215 dual users. A possibly smoking-related disease (PSRD) was recorded in 90 subjects (9.9%); 11 deceased (1.2%). No differences were observed across groups in PSRD rates, with minor changes in self-reported health. Among e-cig users, 64.0% remained tobacco abstinent. Dual users and tobacco smokers did not significantly differ in the rate of cessation of tobacco (38.6% vs. 33.9%, respectively) and all products (23.7% vs. 26.4%). A comparable decrease in daily cigarettes was also observed. 39.5% of the sample switched at least once (tobacco smokers: 15.1%; dual users: 83.3%).

**CONCLUSIONS:** After six years, no evidence of harm reduction was found among e-cig or dual users. The complete switch to e-cig might support tobacco quitters remain abstinent, but the use of e-cig in addition to tobacco did not improve smoking cessation or reduction.

*Key Words:*

Electronic cigarettes, Traditional smoking devices, Heat-not-burn products, Smoking cessation, Harm reduction, Tobacco smoking, Adverse health effects.

## Introduction

In spite of the widespread consensus on the necessity for additional data on electronic cigarette (e-cig) long-term effectiveness and safety to support public health policies<sup>1-12</sup>, uncertainty remains<sup>13,14</sup>. Despite the alarming emergence of observational evidence of lung injuries<sup>15-17</sup> and altered cardiovascular parameters<sup>18</sup> in the short-term, the available information on long-term safety is limited to a large observational cohort with only self-reported data after 3 years of follow-up<sup>19</sup>, and nine healthy vapers, non-former smokers, who were followed for 3.5 years<sup>20</sup>.

Concerning effectiveness, numerous studies with short follow-up are available<sup>1,3-8,11,21-30</sup>, the results are conflicting<sup>14,22,29,31</sup>, and long-term data are still lacking. Finally, scarce longitudinal data are also available on e-cig patterns of use over time<sup>29,32-34</sup>.

In 2013, we initiated the first longitudinal cohort study to evaluate the long-term effectiveness and safety of e-cig through a direct comparison with tobacco cigarette smokers<sup>35</sup>. We previously

published the results of the 12-, 24-, and 48-month follow-up<sup>36-38</sup>; and we are here updating the analyses with the main findings of the 6-year follow-up.

## Patients and Methods

The protocol has been registered on ClinicalTrials.gov (NCT01785537), and published<sup>35</sup>. Briefly, participants were adults (30-75 years) who, since  $\geq 6$  months: smoked only tobacco cigarettes ( $\geq 1$  per day – tobacco smokers), or used any type of e-cig (e-cig users), or used both tobacco and e-cig (dual users). The recruitment was based on general practitioners, internet advertisements and social networks, and e-cig shops. Participants' information was collected through a structured questionnaire, administered directly or by phone and/or internet interviews.

The outcomes of effectiveness were: (a) the rate of quitting of all products (either tobacco and/or e-cig, since 30 days or more); (b) the rate of abstinence (for e-cig users) and cessation from tobacco smoking (for the other two groups) at 72 months; and (c) the difference in the number of tobacco cigarettes per day. To check the abstinence from tobacco, we tested carbon monoxide levels in expired breath (Smokerlyzer<sup>®</sup> piCO<sup>+</sup><sup>™</sup>, Bedford Scientific Ltd., Station Road, Harrietsham, Maidstone, Kent, UK) in a random sample of 50% of the subjects declaring tobacco smoking abstinence.

The safety (health) outcomes were: (a) the rate of possibly smoking-related diseases (PSRD, including chronic obstructive pulmonary disease, myocardial infarction and/or angina, congestive heart failure, transitory cerebrovascular ischemia or stroke, any cancer); and (b) the variation in self-reported health (assessed via the final item of the Italian version of the EuroQol EQ-D5L<sup>39,40</sup>). Allergies and/or mouth irritation were also evaluated separately from other safety outcomes. Safety data were both self-reported and collected through direct contact (for the Sicilian residents – 16.0% of the sample) or hospital discharge abstracts (for the Abruzzo residents – 46.8%). The last data collection was carried out after 72 $\pm$ 3 months since the enrollment.

The Ethics Committee of the University of Chieti-Pescara approved the protocol (Record n. 6; 25-03-2013). A written informed consent was obtained by all participants, and the entire dataset is available upon request from the authors.

## Data Analysis

In long, observational studies, a substantial proportion of participants typically change their exposure status during the follow-up<sup>41,42</sup>. As an example, tobacco smokers can switch to e-cig, and vice versa. Real-life studies in this field present some additional complexities, because the outcome of quitting smoking/vaping is not stable, and can also change over time. Consequently, the classical analytical approach, where participants are classified only according to their baseline exposure status (similar to an Intention-to-treat approach - ITT - which is instead the best approach for randomized trials with stable final outcomes and group switching rate infrequently exceeding 10%), must be complemented with additional analyses that take into account switching and “real-life” group assignments. Thus, a stringent ITT approach was not followed, and the participants who did not provide any data at any follow-up assessment were not included in the analyses. We used the following three analytical approaches, with a decreasing similarity with ITT:

(A1) The exposure group was determined according to the baseline smoking/vaping status (regardless of switching), and the analyses included all participants providing data at the first, 12-month follow-up (n=959). This analytical approach was used for the categorical outcomes of effectiveness.

(A2) The exposure group was assigned according to the baseline status (regardless of switching), but only those who were followed up to 72 months were analyzed (n=912). Remarkably, only one PSRD was observed in previous assessments among the 47 participants that were lost during previous follow-ups. This analytical approach was adopted for the assessments of all the outcomes.

(A3) The exposure group was determined according to the baseline status, but only the participants who provided data at 72 months and never switched smoking/vaping status were included in the analyses. Notably, quitting was not judged as a switch, and this approach was adopted for all safety outcomes and the continuous outcome of effectiveness.

In order to investigate the potential independent predictors of continuous and categorical outcomes, we used, respectively, multivariate random-effect linear and logistic regressions<sup>43,44</sup>, with geographical region as the cluster unit. We set a multivariate model for each of the above three analytical approaches. The following baseline characteristics were included *a priori* into the

models predicting effectiveness outcomes: age, gender, BMI, marital status, educational level, occupation, alcohol use, hypertension, hypercholesterolemia, diabetes mellitus, self-rated health, smoking/vaping amount, and years of tobacco smoking. The models predicting safety (health) outcomes were adjusted only for age, gender, self-rated health, years of tobacco smoking, and hypertension (all of which showed a  $p$ -value  $<0.2$ ) to reduce overfitting. No missing data imputation technique was adopted, because missing data were  $<1\%$  for all variables. Significance was set at 0.05 (two-tailed) for all analyses, which were carried out using Stata 13.1 (Stata Corp., College Station, TX, USA, 2014).

## Results

Of the 1355 enrolled subjects, 959 provided data at least once (70.8%) and were included in the analytical approach A1 (Figure 1). After six years of follow-up, data were available for a total of 912 subjects (50.4 years on average, 56.3% males). According to baseline status, 228 were e-cig users, 469 tobacco smokers, and 215 dual users. These subjects were included in the analytical approach A2.

### Health Outcomes

A PSRD was recorded in 90 subjects (9.9%), with no significant differences by baseline group: 11.4%, 8.1% and 12.1% PSRD were observed among baseline e-cig users, tobacco smokers, and dual users, respectively (Table I, analytical approach A2). Similar results were observed when the analyses were restricted to non-switchers (Table I, A3). Also, no significant differences were found when only cancers ( $n=40$  overall), or mouth irritation ( $n=43$ ) were considered, both in the complete and restricted sample. Moreover, self-reported health showed a very small change over time in all groups (Table I).

The results did not differ substantially when the sample was restricted to the 285 participants who did not switch smoking/vaping group, and were visited or had their outcomes confirmed through a linkage with hospital discharge abstracts: as compared with tobacco smokers, PSRD or cancer rates were lower among e-cig or dual users, but the differences were still not significant (Table I).

Multivariate analyses entirely confirmed univariate results (Table II). Overall, 11 deaths were

registered during the six years of follow-up: 3 among tobacco smokers, 5 among e-cig users, and 3 among dual users ( $p>0.2$ ).

### Outcomes of Effectiveness

A total of 64.0% of the baseline e-cig users remained abstinent from tobacco smoking during the six years of follow-up. Among baseline tobacco smokers and dual users, 33.9% and 38.6% achieved tobacco abstinence, respectively ( $p<0.05$  only for the difference between e-cig users and the other groups; Table III, analytical approach A2). No differences across baseline groups were found in the proportion of subjects who quit either tobacco and/or e-cigarettes: 26.3%, 26.4% and 23.7% achieved complete abstinence among e-cig users, tobacco smokers and dual users, respectively (all  $p>0.05$ ; Table III, A2). Both outcomes showed similar results when the larger, 12-month sample was used (Table III, A1).

A significant decrease in the mean number of tobacco cigarettes smoked daily was observed among both dual users and tobacco smokers, but the reduction was only slightly higher among dual users (-6.0 vs. -5.2, respectively; Table III, A2). When the analyses were repeated, including only the subjects who did not switch (Table III, A3), the dual users showed a significantly larger reduction, as compared to tobacco smokers, of the daily number of tobacco cigarettes (-11.5 vs. -4.2,  $p<0.001$ ). Again, the multivariate analyses substantially confirmed the univariate results (Table IV).

### Switching Smoking/Vaping Status, and Pathway of Use Through the Follow-Up

The participants that changed their exposure status (e.g., from e-cig only to dual use) at least once during the follow-up were defined as “switchers”. Quitting all products was not defined as “switching”, because this is an outcome of effectiveness. The smoking/vaping pathway of all participants during the follow-up, including switching category (yes or no), have been reported in the **Supplementary Figure 1**: 39.5% of the participants switched product during the six years of follow-up, with wide differences across groups: 15.1% of tobacco smokers; 48.2% of e-cig users; and 83.3% of dual users. As a consequence, the analyses restricted to those who never switched were based on a scarce number of e-cig users ( $n=118$ ) and dual users ( $n=36$ ), and the results should be interpreted with caution (Tables III and IV, analytical approach A3).

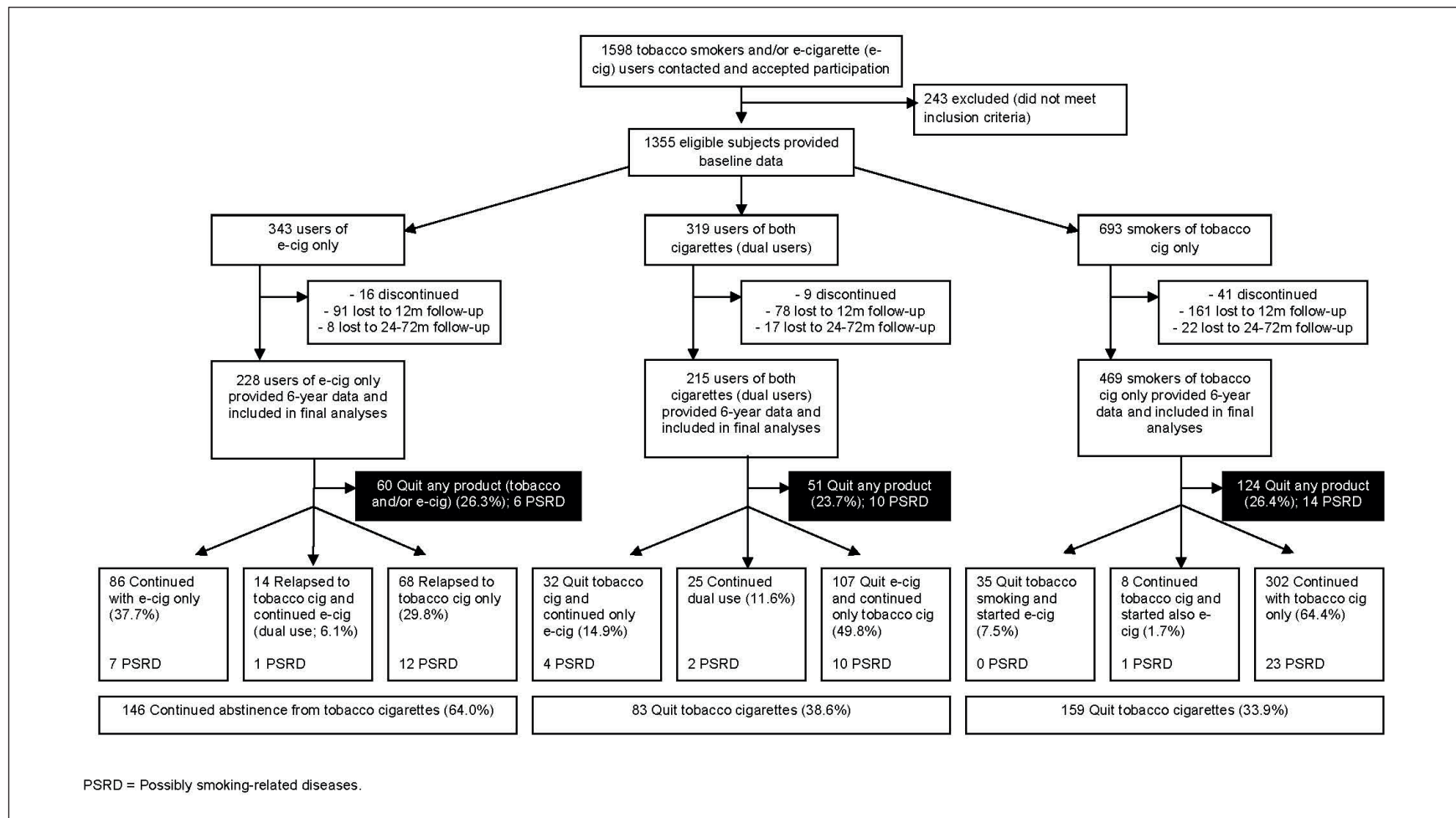


Figure 1. Flow of the participants and numbers of quitters and possibly-related serious adverse events.



**Table I.** Rates of possibly smoking-related diseases  $\psi$  during the follow-up.

	<b>E-cig. % (n/N)</b>	<b>Tobacco cig. % (n/N)</b>	<b>Dual use % (n/N)</b>
<b><i>Any possibly smoking-related disease</i></b>			
A2. Analyses by baseline status, including only the participants with 6-year follow-up data	11.4 (26/228)	8.1 (38/469)	12.1 (26/215)
A3. Analyses restricted to non switchers only, with all data at 72 months	10.2 (12/118)	8.5 (34/398)	11.1 (4/36)
<b><i>Analyses further restricted to the participants with a visit or hospital discharge data available</i></b>			
A2.	12.0 (25/208)	13.1 (26/198)	14.6 (24/164)
A3.	10.0 (11/110)	15.4 (23/149)	15.4 (4/26)
<b><i>Cancer</i></b>			
A2.	6.6 (15/228)	3.6 (17/469)	3.7 (8/215)
A3.	5.1 (6/118)	3.8 (15/398)	5.6 (2/36)
<b><i>Analyses further restricted to the participants with a visit or hospital discharge data available</i></b>			
A2.	6.7 (14/208)	6.6 (13/198)	4.3 (7/164)
A3.	4.6 (5/110)	8.0 (12/149)	7.7 (2/26)
<b><i>Mouth irritation</i></b>			
A2.	6.6 (15/228)	4.5 (21/469)	3.3 (7/215)
A3.	6.8 (8/118)	3.5 (14/398)	0.0 (0/36)
<b>Self-rated health – Mean difference baseline-6 years</b>			
	<b>Mean (SD)</b>	<b>Mean (SD)</b>	<b>Mean (SD)</b>
A2.	-0.1 (1.9)	-0.1 (1.5)	0.0 (1.8)
A3.	-0.2 (1.8)	-0.1 (1.4)	+0.2 (2.1)

<sup>ψ</sup>Chronic obstructive pulmonary disease (COPD), myocardial infarction and/or angina, congestive heart failure, transitory cerebrovascular ischemia or stroke, any cancer. All *p*-values for the comparisons between groups were not significant: they were thus not shown.

Concerning smoking/vaping pathways, of the 343 subjects who switched smoking/vaping group at the 12-, 24- or 48-month assessments, 32.9% (n=113) switched group again during the follow-up. Among the 62 baseline tobacco smokers who changed status, 45 initially switched to e-cig use only. Of them, 26 remained abstinent from tobacco, whereas 19 switched back to tobacco (only, or dual use). Among the 105 baseline e-cig users that changed status, 72 made the first switch to tobacco smoking only. After this switch, only 15 subjects made an additional attempt to quit tobacco. Among the 176 baseline dual users that changed status, 141 made the first switch to tobacco smoking only (114 of them switched after 12 months of follow-up). After this switch, only 30 participants made another attempt to cease smoking.

With regard to the rate of quitting (of all products) failures, more than half of the participants of all groups were able to maintain abstinence after the first quit attempt: 64.8% (94/145) among those who

quit from tobacco (only) smoking; 78.1% (50/64) among e-cig users; 61.1% (22/36) among dual users.

A total of 514 subjects used e-cig at least once during the follow-up (including both e-cig users and dual users at baseline, and those who were tobacco smokers at baseline and then switched to e-cig or dual use during the follow-up). Of them, 505 tried e-cig during 12-, 24-, or 48-month follow-up assessments, and 121 (24.0%) were able to quit the use of all products. A slightly higher cessation rate (28.0%) was observed among the 407 participants who never used e-cig during previous follow-up evaluations.

## Discussion

This report summarizes the longest available evidence on e-cig safety and effectiveness vs. tobacco smoking, adding important confirmation to previous results<sup>36-38</sup>, and describing “real-world” vaping and smoking pathways for more than a quinquennium.

**Table II.** Multivariate analyses on possibly smoking-related diseases and self-reported health.

<b>Outcomes</b>	<b>Adjusted OR (95% CI)</b>	<b>p<sup>A</sup></b>
<b>Possibly smoking-related disease</b>		
A2. Analyses by baseline status, including only the participants with 6-year follow-up data		
– Tobacco smokers (ref. cat.)	1 (–)	–
– E-cig. users	1.17 (0.64-2.13)	0.6
– Dual users	1.48 (0.81-2.70)	0.2
A3. Analyses restricted to non switchers only, with all data at 72 months		
– Tobacco smokers (ref. cat.)	1 (–)	–
– E-cig. users	0.88 (0.40-1.93)	0.7
– Dual users	1.28 (0.38-4.31)	0.7
<b>Self-rated health score</b>		
<b>Difference baseline-6 years</b>		
A2. Analyses by baseline status, including only the participants with 6-year follow-up data		
– Tobacco smokers (ref. cat.)	0 (–)	–
– E-cig. users	-0.19 (-0.42; 0.05)	0.12
– Dual users	0.16 (-0.08; 0.39)	0.19
A3. Analyses restricted to non switchers only, with all data at 72 months		
– Tobacco smokers (ref. cat.)	0 (–)	–
– E-cig. users	-0.24 (-0.62; 0.14)	0.2
– Dual users	0.43 (-0.33; 1.19)	0.3

<sup>A</sup>Multivariate random-effect logistic regression, with geographical region as the cluster unit, adjusted for baseline age, gender, self-rated health, years of tobacco smoking and hypertension.

<sup>B</sup>Multivariate random-effect linear regression, with geographical region as the cluster unit, adjusted for baseline age, gender, BMI, marital status, educational level, occupation, alcohol use, hypertension, hypercholesterolemia, diabetes, self-rated health, smoking/vaping amount, and years of tobacco smoking.

**Table III.** Cigarette use after six years of follow-up.

	<b>E-cig. % (n/N)</b>	<b>Tobacco cig. % (n/N)</b>	<b>Dual use % (n/N)</b>	<b>p*</b>
<b>Quitting any product (tobacco and/or e-cigarettes)</b>				
A1. Analyses by baseline status, including the larger 12-month sample				
	26.7 (63/236)	25.9 (127/491)	22.4 (52/232)	
A2. Analyses by baseline status, including only the participants with 6-year follow-up data				
	26.3 (60/228)	26.4 (124/469)	23.7 (51/215)	
<b>Continuous tobacco abstinence from baseline or cessation from tobacco during follow-up</b>				
A1. Analyses by baseline status, including the larger 12-month sample				
	64.4 (152/236)	33.0 (162/491)	36.6 (85/232)	<0.001 <sup>A</sup> ; <0.001 <sup>B</sup>
A2. Analyses by baseline status, including only the participants with 6-year follow-up data				
	64.0 (146/228)	33.9 (159/469)	38.6 (83/215)	<0.001 <sup>A</sup> ; <0.001 <sup>B</sup>
<b>Number of tobacco cigarettes per day - Mean difference 4y-baseline</b>				
A2. Analyses by baseline status, including only the participants with 6-year follow-up data				
	–	-5.2 (9.5)	-6.0 (11.7)	
A3. Analyses restricted to non switchers only, with all data at 72 months				
	–	-4.2 (9.2)	-11.5 (10.8)	<0.001 <sup>C</sup>

\*p-values that were significant at univariate analyses (using chi-squared test for categorical variables; t-test for continuous ones). If not reported, p-values are >0.05. <sup>A</sup>E-cig. only vs. tobacco cig. only. <sup>B</sup>E-cig. only vs. dual use. <sup>C</sup>Tobacco cig. only vs. dual use.

**Table IV.** Multivariate analyses predicting tobacco and/or e-cig use abstinence and/or cessation, and the difference in the daily number of tobacco cigarettes smoked between year 6 and baseline.

Outcomes	Adjusted OR (95% CI)	p <sup>A</sup>
<b>Quitting any product (tobacco and/or e-cigarettes)</b>		
A1. Analyses by baseline status, including the larger 12-month sample		
– Tobacco only smokers (ref. cat.)	1 (–)	–
– E-cig. only users	0.99 (0.69-1.43)	0.9
– Dual users	0.88 (0.60-1.29)	0.5
A2. Analyses by baseline status, including only the participants with 6-year follow-up data		
– Tobacco only smokers (ref. cat.)	1 (–)	–
– E-cig. only users	0.95 (0.65-1.38)	0.8
– Dual users	0.91 (0.62-1.35)	0.6
<b>Continuous tobacco abstinence from baseline or cessation from tobacco during follow-up</b>		
A1. Analyses by baseline status, including the larger 12-month sample		
– Tobacco only smokers (ref. cat.)	1 (–)	–
– E-cig. only users	3.53 (2.92-4.95)	<0.001
– Dual users	1.18 (0.84-1.65)	0.4
A2. Analyses by baseline status, including only the participants with 6-year follow-up data		
– Tobacco only smokers (ref. cat.)	1 (–)	–
– E-cig. only users	3.34 (2.37-4.70)	<0.001
– Dual users	1.22 (0.86-1.73)	0.3
<b>Number of tobacco cig. per day - Difference 6y-baseline</b>	<b>Adj. coefficient (95% CI)</b>	<b>p<sup>B</sup></b>
A2. Analyses by baseline status, including only participants with 6-year follow-up data		
– Tobacco only smokers (ref. cat.)	0 (–)	–
– Dual users	0.43 (-0.98; 1.83)	0.6
A3. Analyses restricted to non switchers only, with all data at 72 months		
– Tobacco only smokers (ref. cat.)	0 (–)	–
– Dual users	6.51 (3.77; 9.26)	<0.001

<sup>A</sup>Multivariate random-effect logistic regression, with geographical region as the cluster unit, adjusted for baseline age, gender, BMI, marital status, educational level, occupation, alcohol use, hypertension, hypercholesterolemia, diabetes, self-rated health, smoking/vaping amount, and years of tobacco smoking.

<sup>B</sup>Multivariate random-effect linear regression, with geographical region as the cluster unit, adjusted for baseline age, gender, BMI, marital status, educational level, occupation, alcohol use, hypertension, hypercholesterolemia, diabetes, self-rated health, smoking/vaping amount, and years of tobacco smoking.

First, after six years of follow-up, no evidence of harm reduction emerged among e-cig users, as compared to tobacco smokers. This finding was consistent for all health outcomes (including cancer), and across all analytical approaches. Additionally, e-cig use did not substantially improve self-reported health. Our results are in line with those of several prior studies, all suggesting the absence of a net health benefit among e-cig users when compared to traditional tobacco smokers<sup>19-21,24-26,45-49</sup>, while other studies outlined potential positive effects of e-cig in the regulation of cardiovascular<sup>18,50</sup>, or laboratory<sup>32,51-53</sup> parameters. However, the interpretation of these studies must take into account the short duration of their follow-up, never exceeding 3.5 years<sup>20</sup>, while any decrease in the excess risk of tobacco smoking

may take a minimum of five years to emerge<sup>54</sup>. Thus, the strength of the evidence either in favor or against any harm reduction resulting from the exclusive use of e-cig was severely limited, and additional long-term data were strongly awaited. In this scenario, although the present findings add further evidence, additional studies with even longer follow-ups are required: in a sample composed by former smokers, a decade would be more appropriate to detect significant risk reductions for cancers or cardiovascular diseases<sup>54</sup>.

Second, although the complete switch to e-cig confirmed to help tobacco quitters to remain abstinent from smoking, with six-year relapse rates lower than 40%, the use of e-cig in addition to tobacco smoking (dual use) proved to be only marginally useful to promote smoking cessation:

the quitting rates (of both tobacco and/or e-cig) among baseline dual users were comparable to those of baseline tobacco smokers (with about 80% of dual users relapsing to tobacco smoking at some time during follow-up), and, in line with the 4-year assessment<sup>38</sup>, the reduction of tobacco cigarettes smoked per day was non significantly different between dual users and tobacco only smokers. In the heterogeneous scenario currently available, with differences in study design, analytical approaches, comparator groups and selected populations, and relatively short follow-up<sup>20</sup>, our results support, on one side, the encouraging role of e-cig alone, also in the long term, in helping tobacco smokers remaining abstinent, consistent with previous studies showing higher tobacco abstinence rates among e-cig users<sup>27,33</sup> (who were also more likely to attempt and successfully quit<sup>23,55</sup>). On the other side, the present findings indicate what has been previously shown on the absence of any benefit when e-cig are used in combination with tobacco cigarettes<sup>47,56-61</sup>. In contrast to these findings, however, some analyses showed lower tobacco abstinence rates among e-cig users<sup>21,24,25,28,48,62,63</sup>, or even encouraging results for dual use (higher quitting rates and lower relapsing rates as compared to traditional smoking)<sup>23,64</sup>. Some of these studies, however, enrolled subjects less motivated to quit<sup>25,28,48,63</sup>; in addition, bans against e-cigarette sales<sup>62</sup> may have contributed, at least in part, to the low quitting rates among e-cig users reported in some previous analyses<sup>65,66</sup>. Moreover, another element may have contributed to explain the favourable results achieved among dual users in some recent surveys: second- or third-generation e-cig are more effective than older versions in nicotine delivery, thus reducing nicotine withdrawal symptoms and improving sustained nicotine abstinence<sup>38</sup>.

A growing body of evidence<sup>33,58,59,67</sup>, although still limited, has focused on the pathways of use of e-cig or dual users, followed for a maximum of 3 years. In contrast with previous findings that most e-cig users are able to remain so<sup>58,59,67</sup>, and about two thirds of dual users shift to e-cig alone during follow-up<sup>33</sup>, we found patterns of use largely varying throughout the six years of follow-up. Less than one fifth of baseline tobacco smokers made an attempt to use e-cig (alone or in combination), while half of e-cig users, and more than 80% of dual users switched group at least once during follow-up, mostly to restart with tobacco smoking (alone or combined). Additionally, once a relapse to tobacco was made,

only a minority of baseline e-cig and dual users performed a further attempt to quit. However, more than 60% of quitting attempts proved successful irrespective of baseline group, notably with no significant differences between ever and never e-cig users. Taken together, these findings add to the existing evidence<sup>6,68,69</sup> on the dramatic reluctance of tobacco smokers to change their habit over and beyond quitting, and suggest that, even when the switching pattern was kept into account, the use of e-cig, either alone or in combination with tobacco cigarettes, did not seem to substantially enhance the propensity to quit. The higher switching rates from e-cig or dual use that we found in our sample may be explained, at least in part, by the presence in our study of multiple assessment performed throughout a long period of time, as compared to prior studies with shorter follow-up and only baseline-endline assessments<sup>33,58,59,67</sup>. This approach allowed us to literally monitor, for each patient, all changes occurred throughout six years, thus providing a multifaceted pattern, more complex to interpret but also more adherent to the high variability of a “real life” scenario. Additionally, increasing evidence suggests that, among former tobacco smokers, the use of first-generation devices (with low nicotine concentration) is a strong predictor of stopping e-cig use to switch back to tobacco<sup>67,70,71</sup>. It is possible that a large proportion of baseline e-cig and dual users enrolled in our sample used older devices. Unfortunately, however, we were not able to verify such hypothesis because we did not collect data on the type of e-cig used.

Some limitations of the study must be considered. First, although false assertions were rare (<10 overall, during all evaluations), part of the data were self-reported: we were able to confirm the cessation of tobacco smoking - through a test of carbon monoxide levels - in only 50% of the quitters, and only 62.8% of the participants had their health data checked through direct visits or hospital discharge abstracts. Second, 29.2% of the participants were lost at the first follow-up. However, responders and non-responders were comparable for most variables<sup>36</sup>, and the rate of subsequent losses was very low. Third, similar to several observational studies in the field, we included all types of e-cig to approach real-life conditions, but different e-cig models with various nicotine doses might lead to diverse results<sup>58</sup>. However, the rates of tobacco abstinence and all-smoking cessation did not differ by nicotine concentration (<sup>36</sup>, 6-year data not shown), and ob-



servational studies, which imply a free choice of product, may represent a better picture of the real world experiences<sup>72</sup>.

## Conclusions

After six years of follow-up of a large sample of current or former smokers, the use of e-cig, either alone or in combination with tobacco cigarettes, did not significantly decrease the rate of diseases potentially related to tobacco, and did not substantially improve self-reported health. Although the follow-up is the longest to date, and the findings add to the growing evidence on the concerns on the health benefit of e-cig, further studies with follow-ups approaching a decade are required to elucidate the long-term impact on cancer or cardiovascular risk. Regarding the potential effectiveness of vaping for smoking cessation, the complete switch to e-cig, when persistent, did help tobacco quitters to remain abstinent from smoking, but the combined e-cig use in addition to tobacco smoking (dual use) did not increase the likelihood of either smoking cessation or reduction. In real-life conditions, the vast majority of dual users and half of e-cig users switched smoking/vaping status during the follow-up, rising important issues for the classification of these subjects, and suggesting that more real-life data, with multiple assessments, are required to improve the validity of long-term observational or experimental studies on the effects of electronic and/or tobacco cigarettes, as well as most recent heat-not-burn tobacco products.

## Author Contributions

Conceptualization, M.E.F. and L.M.; methodology, M.E.F., M.Fi., C.A.M., M.Fe., M.R.G., G.L., F.B., and L.M.; software, C.A.M., F.B., and L.M.; validation, C.M., M.Fe., and G.L.; formal analysis, M.E.F., C.A.M., and L.M.; investigation, M.Fi., F.B., C.M., and M.R.G.; resources, M.E.F., M.Fi., M.Fe., C.M., G.M.P., and L.M.; data curation, L.M.; writing-original draft preparation, M.E.F. and L.M.; visualization, G.M.P.; writing-review and editing, M.Fi., M.Fe., G.L.; supervision, M.Fe., and G.L.; project administration, L.M., and M.R.G.; funding acquisition, L.M. and G.M.P.

## Acknowledgments

The investigators are grateful to Prof. Stefano Puleo for his crucial support to the study funding, and to Dr. Serena Di Sante, Dr. Marilena Maglia, the students of the Faculty of Medicine of Catania and general practitioners from Abruzzo for their help during recruitment or follow-up assessments.

## Funding Acknowledgments

The first five years of the study were funded by personal donations from the authors, by a research grant from the University of Catania and through crowdfunding (Kickstarter project titled "E-cigarette long-term efficacy & safety: a study to complete"). The sixth year was partially supported by British American Tobacco, which allowed the study to be concluded. The funders had no role in the design of the study; in the collection, analyses, or interpretation of data; in the writing of the manuscript, or in the decision to publish the results.

## Conflict of Interests

The authors declare that they have no conflict of interests.

## References

- 1) BAULD L, McNEILL A, HAJEK P, BRITTON J, DOCKRELL M. E-cigarette use in public places: striking the right balance. *Tob Control* 2017; 26: e5-e6.
- 2) CAPASSO L, GUALANO MR, FLACCO ME, SILIQUINI R, MANZOLI L. E-cigarette regulations in Italy: fluctuating and confusing. *Lancet* 2014; 383: 1883.
- 3) EL DIB R, SUZUMURA EA, AKL EA, GOMAA H, AGARWAL A, CHANG Y, PRASAD M, ASHOORION V, HEELS-ANSELL D, MAZIAK W, GUYATT G. Electronic nicotine delivery systems and/or electronic non-nicotine delivery systems for tobacco smoking cessation or reduction: a systematic review and meta-analysis. *BMJ Open* 2017; 7: e012680.
- 4) GLASSER AM, COLLINS L, PEARSON JL, ABUDAYYEH H, NIAURA RS, ABRAMS DB, VILLANTI AC. Overview of electronic nicotine delivery systems: a systematic review. *Am J Prev Med* 2017; 52: e33-e66.
- 5) GUALANO MR, PASSI S, BERT F, LA TORRE G, SCAIOLI G, SILIQUINI R. Electronic cigarettes: assessing the efficacy and the adverse effects through a systematic review of published studies. *J Public Health (Oxf)* 2015; 37: 488-497.
- 6) HARTMANN-BOYCE J, McROBBIE H, BULLEN C, BEGH R, STEAD LF, HAJEK P. Electronic cigarettes for smoking cessation. *Cochrane Database Syst Rev* 2016; 9: CD010216.
- 7) KALKHORAN S, GLANTZ SA. E-cigarettes and smoking cessation in real-world and clinical settings: a systematic review and meta-analysis. *Lancet Respir Med* 2016; 4: 116-128.
- 8) MALAS M, VAN DER TEMPEL J, SCHWARTZ R, MINICHIELLO A, LIGHTFOOT C, NOORMOHAMED A, ANDREWS J, ZAWERTALO L, FERRENCE R. Electronic cigarettes for smoking cessation: a systematic review. *Nicotine Tob Res* 2016; 18: 1926-1936.
- 9) McROBBIE H. Modelling the population health effects of e-cigarettes use: current data can help guide future policy decisions. *Nicotine Tob Res* 2017; 19: 131-132.
- 10) PISINGER C, DOSSING M. A systematic review of health effects of electronic cigarettes. *Prev Med* 2014; 69: 248-260.

- 11) RAHMAN MA, HANN N, WILSON A, MNATZAGANIAN G, WORRALL-CARTER L. E-cigarettes and smoking cessation: evidence from a systematic review and meta-analysis. *PLoS One* 2015; 10: e0122544.
- 12) ERKU DA, MORPHETT K, STEADMAN KJ, GARTNER CE. Policy debates regarding nicotine vaping products in australia: a qualitative analysis of submissions to a government inquiry from health and medical organisations. *Int J Environ Res Public Health* 2019; 16: 4555-4572.
- 13) FARSALINOS K. Electronic cigarettes: an aid in smoking cessation, or a new health hazard? *Ther Adv Respir Dis* 2018; 12: 1-20.
- 14) MANZOLI L, BOCCIA S. Electronic cigarettes: scarce data and divergent legislations. The need for evidence-based health policies and research funding. *Eur J Public Health* 2015; 36: 370-371.
- 15) BLAGEV DP, HARRIS D, DUNN AC, GUIDRY DW, GRISSOM CK, LANSPA MJ. Clinical presentation, treatment, and short-term outcomes of lung injury associated with e-cigarettes or vaping: a prospective observational cohort study. *Lancet* 2019; 394: 2073-2083.
- 16) HARTNETT KP, KITE-POWELL A, PATEL MT, HAAG BL, SHEPPARD MJ, DIAS TP, KING BA, MELSTROM PC, RITCHEY MD, STEIN Z, IDAIKKADAR N, VIVOLO-KANTOR AM, ROSE DA, BRISS PA, LAYDEN JE, RODGERS L, ADJEMIAN J. Syndromic surveillance for e-cigarette, or vaping, product use-associated lung injury. *N Engl J Med* 2020; 382: 766-772.
- 17) PEREZ MF, ATUEGWU NC, MEAD EL, ONCKEN C, MORTENSEN EM. Adult e-cigarettes use associated with a self-reported diagnosis of COPD. *Int J Environ Res Public Health* 2019; 16: pii: E3938.
- 18) SKOTSIMARA G, ANTONOPOULOS AS, OIKONOMOU E, SIASOS G, IOAKEIMIDIS N, TSALAMANDRIS S, CHARALAMBOS G, GALIATSATOS N, VLACHOPOULOS C, TOUSOULIS D. Cardiovascular effects of electronic cigarettes: a systematic review and meta-analysis. *Eur J Prev Cardiol* 2019; 26: 1219-1228.
- 19) BHATTA DN, GLANTZ SA. Association of e-cigarette use with respiratory disease among adults: a longitudinal analysis. *Am J Prev Med* 2020; 58: 182-190.
- 20) POLOSA R, CIBELLA F, CAPONNETTO P, MAGLIA M, PROSPERINI U, RUSSO C, TASHKIN D. Health impact of E-cigarettes: a prospective 3.5-year study of regular daily users who have never smoked. *Sci Rep* 2017; 7: 13825.
- 21) ADRIAENS K, VAN GUCHT D, DECLERCK P, BAUYENS F. Effectiveness of the electronic cigarette: An eight-week Flemish study with six-month follow-up on smoking reduction, craving and experienced benefits and complaints. *Int J Environ Res Public Health* 2014; 11: 11220-11248.
- 22) AVEYARD P, ARNOTT D, JOHNSON KC. Should we recommend e-cigarettes to help smokers quit? *BMJ* 2018; 361: k1759.
- 23) BERRY KM, REYNOLDS LM, COLLINS JM, SIEGEL MB, FETTERMAN JL, HAMBURG NM, BHATNAGAR A, BENJAMIN EJ, STOKES A. E-cigarette initiation and associated changes in smoking cessation and reduction: the Population Assessment of Tobacco and Health Study, 2013-2015. *Tob Control* 2019; 28: 42-49.
- 24) BULLEN C, HOWE C, LAUGENSEN M, McROBBIE H, PARAG V, WILLIMAN J, WALKER N. Electronic cigarettes for smoking cessation: a randomised controlled trial. *Lancet* 2013; 382: 1629-1637.
- 25) CAPONNETTO P, CAMPAGNA D, CIBELLA F, MORJARIA JB, CARUSO M, RUSSO C, POLOSA R. Efficiency and Safety of an eElectronic cigAreTte (ECLAT) as tobacco cigarettes substitute: a prospective 12-month randomized control design study. *PLoS One* 2013; 8: e66317.
- 26) CRAVO AS, BUSH J, SHARMA G, SAVIOZ R, MARTIN C, CRAIGE S, WALELE T. A randomised, parallel group study to evaluate the safety profile of an electronic vapour product over 12 weeks. *Regul Toxicol Pharmacol* 2016; 81 Suppl 1: S1-S14.
- 27) HAJEK P, PHILLIPS-WALLER A, PRZULJ D, PESOLA F, MYERS SMITH K, BISAL N, LI J, PARROTT S, SASIENI P, DAWKINS L, ROSS L, GONIEWICZ M, WU Q, McROBBIE HJ. A randomized trial of e-cigarettes versus nicotine-replacement therapy. *N Engl J Med* 2019; 380: 629-637.
- 28) HALPERN SD, HARHAY MO, SAULSGIVER K, BROPHY C, TROXEL AB, VOLPP KG. A pragmatic trial of e-cigarettes, incentives and drugs for smoking cessation. *N Engl J Med* 2018; 378: 2302-2310.
- 29) NATIONAL ACADEMIES OF SCIENCES ENGINEERING AND MEDICINE. Public health consequences of e-cigarettes. Washington, DC: The National Academies Press; 2018.
- 30) WEAVER SR, HUANG J, PECHACEK TF, HEATH JW, ASHLEY DL, ERIKSEN MP. Are electronic nicotine delivery systems helping cigarette smokers quit? Evidence from a prospective cohort study of U.S. adult smokers, 2015-2016. *PLoS One* 2018; 13: e0198047.
- 31) PROTANO C, DI MILIA LM, ORSI GB, VITALI M. Electronic cigarette: a threat or an opportunity for public health? State of the art and future perspectives. *Clin Ter* 2015; 166: 32-37.
- 32) McNEILL A, BROSE LS, CALDER R, BAULD L, ROBSON D. Evidence review of e-cigarettes and heated tobacco products 2018. A report commissioned by Public Health England. London: Public Health England; 2018.
- 33) DU P, FAN T, YINGST J, VELDHEER S, HRABOVSKY S, CHEN C, FOULDS J. Changes in e-cigarette use behaviors and dependence in long-term e-cigarette users. *Am J Prev Med* 2019; 57: 374-383.
- 34) OWUSU D, HUANG J, WEAVER SR, PECHACEK TF, ASHLEY DL, NAYAK P, ERIKSEN MP. Patterns and trends of dual use of e-cigarettes and cigarettes among U.S. adults, 2015-2018. *Prev Med Rep* 2019; 16: 101009.
- 35) MANZOLI L, LA VECCHIA C, FLACCO ME, CAPASSO L, SIMONETTI V, BOCCIA S, DI BALDASSARRE A, VILLARI P, MEZZETTI A, CICOLINI G. Multicentric cohort study on the long-term efficacy and safety of electronic cigarettes: study design and methodology. *BMC Public Health* 2013; 13: 883.
- 36) MANZOLI L, FLACCO ME, FIORE M, LA VECCHIA C, MARZUILLO C, GUALANO MR, LIGUORI G, CICOLINI G, CAPASSO L, D'AMARIO C, BOCCIA S, SILIQUINI R, RICCIARDI W, VILLARI P. Electronic cigarettes efficacy and safety at 12 months: cohort study. *PLoS One* 2015; 10: e0129443.

- 37) MANZOLI L, FLACCO ME, FERRANTE M, LA VECCHIA C, SILIQUINI R, RICCIARDI W, MARZULLO C, VILLARI P, FIORE M. Cohort study of electronic cigarette use: effectiveness and safety at 24 months. *Tob Control* 2017; 26: 284-292.
- 38) FLACCO ME, FERRANTE M, FIORE M, MARZULLO C, LA VECCHIA C, GUALANO MR, LIGUORI G, FRAGASSI G, CARRADORI T, BRAVI F, SILIQUINI R, RICCIARDI W, VILLARI P, MANZOLI L. Cohort study of electronic cigarette use: safety and effectiveness after 4 years of follow-up. *Eur Rev Med Pharmacol Sci* 2019; 23: 402-412.
- 39) CAPPUCCIO F, ROSSETTI S, CAVALIERE C, IOVANE G, TAIBI R, D'ANIELLO C, IMBIMBO C, FACCHINI S, ABATE V, BARBERIO D, FACCHINI G. Health-related quality of life and psychosocial implications in testicular cancer survivors. A literature review. *Eur Rev Med Pharmacol Sci* 2018; 22: 645-661.
- 40) SAVOIA E, FANTINI MP, PANDOLFI PP, DALLOLIO L, COLLINA N. Assessing the construct validity of the Italian version of the EQ-5D: preliminary results from a cross-sectional study in North Italy. *Health Qual Life Outcomes* 2006; 4: 47.
- 41) HUGHES JR, PETERS EN, NAUD S. Relapse to smoking after 1 year of abstinence: a meta-analysis. *Addict Behav* 2008; 33: 1516-1520.
- 42) KRALL EA, GARVEY AJ, GARCIA RI. Smoking relapse after 2 years of abstinence: findings from the VA Normative Aging Study. *Nicotine Tob Res* 2002; 4: 95-100.
- 43) PERILLI V, ACETO P, ANCONA P, DE CICCO R, PAPANICE D, MAGALINI S, PEPE G, COZZA V, GUI D, LAI C, SOLLAZZI L. Role of surgical setting and patients-related factors in predicting the occurrence of postoperative pulmonary complications after abdominal surgery. *Eur Rev Med Pharmacol Sci* 2018; 22: 547-550.
- 44) YU K, JIANG ZH, ZHANG LG. Therapeutic effects of long-term continuous positive airway pressure treatment on improving leptomenigeal collateral circulation in obstructive sleep apnea syndrome patients. *Eur Rev Med Pharmacol Sci* 2018; 22: 4261-4267.
- 45) CIBELLA F, CAMPAGNA D, CAPONNETTO P, AMARADIO MD, CARUSO M, RUSSO C, COCKCROFT DW, POLOSA R. Lung function and respiratory symptoms in a randomized smoking cessation trial of electronic cigarettes. *Clin Sci (Lond)* 2016; 130: 1929-1937.
- 46) FARSALINOS KE, POULAS K, VOUDRIS V, LE HOUZEZEC J. Electronic cigarette use in the European Union: analysis of a representative sample of 27 460 Europeans from 28 countries. *Addiction* 2016; 111: 2032-2040.
- 47) POLOSA R, CAPONNETTO P, MORJARIA JB, PAPALE G, CAMPAGNA D, RUSSO C. Effect of an electronic nicotine delivery device (e-Cigarette) on smoking reduction and cessation: a prospective 6-month pilot study. *BMC Public Health* 2011; 11: 786.
- 48) POLOSA R, MORJARIA JB, CAPONNETTO P, CAMPAGNA D, RUSSO C, ALAMO A, AMARADIO M, FISICHELLA A. Effectiveness and tolerability of electronic cigarette in real-life: a 24-month prospective observational study. *Intern Emerg Med* 2014; 9: 537-546.
- 49) WALELE T, BUSH J, KOCH A, SAVIOZ R, MARTIN C, O'CONNELL G. Evaluation of the safety profile of an electronic vapour product used for two years by smokers in a real-life setting. *Regul Toxicol Pharmacol* 2018; 92: 226-238.
- 50) GEORGE J, HUSSAIN M, VADIVELOO T, IRELAND S, HOPKINSON P, STRUTHERS AD, DONNAN PT, KHAN F, LANG CC. Cardiovascular effects of switching from tobacco cigarettes to electronic cigarettes. *J Am Coll Cardiol* 2019; 74: 3112-3120.
- 51) PELLEGRINO RM, TINGHINO B, MANGIARACINA G, MARANI A, VITALI M, PROTANO C, OSBORN JF, CATTARUZZA MS. Electronic cigarettes: an evaluation of exposure to chemicals and fine particulate matter (PM). *Ann Ig* 2012; 24: 279-288.
- 52) SAITTA D, CHOWDHURY A, FERRO GA, NALIS FG, POLOSA R. A Risk assessment matrix for public health principles: the case for e-cigarettes. *Int J Environ Res Public Health* 2017; 14: 363.
- 53) STEPHENS WE. Comparing the cancer potencies of emissions from vapourised nicotine products including e-cigarettes with those of tobacco smoke. *Tob Control* 2017 Aug 4. pii: tobaccocontrol-2017-053808. doi: 10.1136/tobaccocontrol-2017-053808. [Epub ahead of print]
- 54) AHMED AA, PATEL K, NYAKU MA, KHEIRBEK RE, BITTNER V, FONAROW GC, FILIPPATOS GS, MORGAN CJ, ABAN IB, MUJIB M, DESAI RV, ALLMAN RM, WHITE M, DEEDWANIA P, HOWARD G, BONOW RO, FLETCHER RD, ARONOW WS, AHMED A. Risk of heart failure and death after prolonged smoking cessation: role of amount and duration of prior smoking. *Circ Heart Fail* 2015; 8: 694-701.
- 55) BEGH R, LINDSON-HAWLEY N, AVEYARD P. Does reduced smoking if you can't stop make any difference? *BMC Med* 2015; 13: 257.
- 56) BIENER L, HARGRAVES JL. A longitudinal study of electronic cigarette use in a population-based sample of adult smokers: association with smoking cessation and motivation to quit. *Nicotine Tob Res* 2014; 17: 127-133.
- 57) CAPONNETTO P, AUDITORE R, RUSSO C, CAPPELLO GC, POLOSA R. Impact of an electronic cigarette on smoking reduction and cessation in schizophrenic smokers: a prospective 12-month pilot study. *Int J Environ Res Public Health* 2013; 10: 446-461.
- 58) ETTER JF. Electronic cigarette: a longitudinal study of regular vapers. *Nicotine Tob Res* 2018; 20: 912-922.
- 59) ETTER JF, BULLEN C. A longitudinal study of electronic cigarette users. *Addict Behav* 2014; 39: 491-494.
- 60) VICKERMAN KA, CARPENTER KM, ALTMAN T, NASH CM, ZBIKOWSKI SM. Use of electronic cigarettes among state tobacco cessation quitline callers. *Nicotine Tob Res* 2013; 15: 1787-1791.
- 61) WU SY, WANG MP, LI WH, KWONG AC, LAI VW, LAM TH. Does Electronic cigarette use predict abstinence from conventional cigarettes among smokers in Hong Kong? *Int J Environ Res Public Health* 2018; 15: 400-410.
- 62) ADKISON SE, O'CONNOR RJ, BANSAL-TRAVERS M, HYLAND A, BORLAND R, YONG HH, CUMMINGS KM, McNEILL A, THRASHER JF, HAMMOND D, FONG GT. Electronic nicotine delivery systems: international tobacco

- control four-country survey. *Am J Prev Med* 2013; 44: 207-215.
- 63) GRANA RA, POPOVA L, LING PM. A longitudinal analysis of electronic cigarette use and smoking cessation. *JAMA Intern Med* 2014; 174: 812-813.
- 64) ZHU SH, ZHUANG YL, WONG S, CUMMINS SE, TEDESCHI GJ. E-cigarette use and associated changes in population smoking cessation: evidence from US current population surveys. *BMJ* 2017; 358: j3262.
- 65) FRIEDMAN AS. How does electronic cigarette access affect adolescent smoking? *J Health Econ* 2015; 44: 300-308.
- 66) MEERNIK C, BAKER HM, KOWITT SD, RANNEY LM, GOLDSTEIN AO. Impact of non-menthol flavours in e-cigarettes on perceptions and use: an updated systematic review. *BMJ Open* 2019; 9: e031598.
- 67) YINGST J, FOULDS J, VELDHEER S, DU P. Device characteristics of long term electronic cigarette users: a follow-up study. *Addict Behav* 2019; 91: 238-243.
- 68) HUGHES JR, KEELY J, NAUD S. Shape of the relapse curve and long-term abstinence among untreated smokers. *Addiction* 2004; 99: 29-38.
- 69) STEAD LF, PERERA R, BULLEN C, MANT D, HARTMANN-BOYCE J, CAHILL K, LANCASTER T. Nicotine replacement therapy for smoking cessation. *Cochrane Database Syst Rev* 2012; 11: CD000146.
- 70) ETTER JF. Characteristics of users and usage of different types of electronic cigarettes: findings from an online survey. *Addiction* 2016; 111: 724-733.
- 71) KOZLOWSKI LT, HOMISH DL, HOMISH GG. Daily users compared to less frequent users find vape as or more satisfying and less dangerous than cigarettes, and are likelier to use non-cig-alike vaping products. *Prev Med Rep* 2017; 6: 111-114.
- 72) HITCHMAN SC, BROSE LS, BROWN J, ROBSON D, McNEILL A. Associations between E-cigarette type, frequency of use, and quitting smoking: findings from a longitudinal online panel survey in Great Britain. *Nicotine Tob Res* 2015; 17: 1187-1194.



Baseline	12 months	24 months	4 years	6 years	N. of subjects	Switched Group	Quit all use	Quit Tobacco smoking
Tobacco	Tobacco	Tobacco	Tobacco	Tobacco	251	No	No	No
Tobacco	Tobacco	Tobacco	Tobacco	E-cig.	6	Yes	No	Yes
Tobacco	Tobacco	Tobacco	Tobacco	Dual	3	Yes	No	No
Tobacco	Tobacco	Tobacco	Tobacco	Quit	25	No	Yes	Yes
Tobacco	Tobacco	Tobacco	E-cig.	E-cig.	3	Yes	No	Yes
Tobacco	Tobacco	Tobacco	E-cig.	Quit	2	Yes	Yes	Yes
Tobacco	Tobacco	Tobacco	Dual	Tobacco	1	Yes	No	No
Tobacco	Tobacco	Tobacco	Dual	Dual	2	Yes	No	No
Tobacco	Tobacco	Tobacco	Dual	Quit	1	Yes	Yes	Yes
Tobacco	Tobacco	Tobacco	Quit	Tobacco	1	No	No	No
Tobacco	Tobacco	Tobacco	Quit	Quit	24	No	Yes	Yes
Tobacco	Tobacco	E-cig.	Tobacco	Tobacco	1	Yes	No	No
Tobacco	Tobacco	E-cig.	E-cig.	Tobacco	1	Yes	No	No
Tobacco	Tobacco	E-cig.	E-cig.	E-cig.	3	Yes	No	Yes
Tobacco	Tobacco	E-cig.	E-cig.	Dual	1	Yes	No	No
Tobacco	Tobacco	Dual	Tobacco	Tobacco	1	Yes	No	No
Tobacco	Tobacco	Dual	Dual	Quit	1	Yes	Yes	Yes
Tobacco	Tobacco	Quit	Tobacco	Tobacco	9	No	No	No
Tobacco	Tobacco	Quit	Tobacco	Quit	2	No	Yes	Yes
Tobacco	Tobacco	Quit	E-cig.	E-cig.	1	Yes	No	Yes
Tobacco	Tobacco	Quit	Quit	Tobacco	4	No	No	No
Tobacco	Tobacco	Quit	Quit	Quit	19	No	Yes	Yes
Tobacco	E-cig.	Tobacco	Tobacco	Tobacco	5	Yes	No	No
Tobacco	E-cig.	Tobacco	Tobacco	E-cig.	1	Yes	No	Yes
Tobacco	E-cig.	Tobacco	Tobacco	Quit	2	Yes	Yes	Yes
Tobacco	E-cig.	Tobacco	E-cig.	E-cig.	1	Yes	No	Yes
Tobacco	E-cig.	Tobacco	Quit	E-cig.	1	Yes	No	Yes
Tobacco	E-cig.	E-cig.	E-cig.	E-cig.	16	Yes	No	Yes
Tobacco	E-cig.	E-cig.	E-cig.	Quit	1	Yes	Yes	Yes
Tobacco	E-cig.	E-cig.	Dual	Tobacco	1	Yes	No	No
Tobacco	E-cig.	E-cig.	Dual	E-cig.	1	Yes	No	Yes
Tobacco	E-cig.	E-cig.	Dual	Dual	1	Yes	No	No
Tobacco	E-cig.	E-cig.	Quit	Tobacco	1	Yes	No	No
Tobacco	E-cig.	Dual	E-cig.	E-cig.	1	Yes	No	Yes
Tobacco	E-cig.	Dual	Dual	Quit	1	Yes	Yes	Yes
Tobacco	E-cig.	Quit	Quit	Quit	1	Yes	Yes	Yes
Tobacco	Dual	Tobacco	Tobacco	Tobacco	5	Yes	No	No
Tobacco	Dual	Tobacco	Dual	Tobacco	1	Yes	No	No
Tobacco	Dual	Dual	E-cig.	E-cig.	1	Yes	No	Yes
Tobacco	Dual	Dual	Dual	Tobacco	1	Yes	No	No
Tobacco	Dual	Quit	Quit	Quit	1	Yes	Yes	Yes



Baseline	12 months	24 months	4 years	6 years	N. of subjects	Switched Group	Quit all use	Quit Tobacco smoking
Tobacco	Quit	Tobacco	Tobacco	Tobacco	11	No	No	No
Tobacco	Quit	Tobacco	Tobacco	Quit	3	No	Yes	Yes
Tobacco	Quit	Tobacco	Dual	Dual	1	Yes	No	No
Tobacco	Quit	Tobacco	Quit	Tobacco	1	No	No	No
Tobacco	Quit	Tobacco	Quit	Quit	2	No	Yes	Yes
Tobacco	Quit	Quit	Tobacco	Tobacco	5	No	No	No
Tobacco	Quit	Quit	Tobacco	Quit	1	No	Yes	Yes
Tobacco	Quit	Quit	Quit	Tobacco	2	No	No	No
Tobacco	Quit	Quit	Quit	Quit	38	No	Yes	Yes
E-cig.	Tobacco	Tobacco	Tobacco	Tobacco	41	Yes	No	No
E-cig.	Tobacco	Tobacco	Tobacco	E-cig.	1	Yes	No	Yes
E-cig.	Tobacco	Tobacco	Tobacco	Quit	3	Yes	Yes	Yes
E-cig.	Tobacco	Tobacco	E-cig.	E-cig.	2	Yes	No	Yes
E-cig.	Tobacco	Tobacco	Dual	Tobacco	2	Yes	No	No
E-cig.	Tobacco	Tobacco	Dual	Dual	1	Yes	No	No
E-cig.	Tobacco	Tobacco	Dual	Quit	2	Yes	Yes	Yes
E-cig.	Tobacco	E-cig.	E-cig.	E-cig.	3	Yes	No	Yes
E-cig.	Tobacco	Dual	Tobacco	Tobacco	2	Yes	No	No
E-cig.	Tobacco	Dual	Tobacco	Dual	1	Yes	No	No
E-cig.	Tobacco	Dual	Dual	Dual	1	Yes	No	No
E-cig.	Tobacco	Dual	Quit	Quit	1	Yes	Yes	Yes
E-cig.	Tobacco	Quit	Tobacco	Quit	1	Yes	Yes	Yes
E-cig.	Tobacco	Quit	Quit	Tobacco	2	Yes	No	No
E-cig.	E-cig.	Tobacco	Tobacco	Tobacco	3	Yes	No	No
E-cig.	E-cig.	E-cig.	Tobacco	Quit	1	Yes	Yes	Yes
E-cig.	E-cig.	E-cig.	E-cig.	Tobacco	1	Yes	No	No
E-cig.	E-cig.	E-cig.	E-cig.	E-cig.	70	No	No	Yes
E-cig.	E-cig.	E-cig.	E-cig.	Dual	2	Yes	No	No
E-cig.	E-cig.	E-cig.	E-cig.	Quit	2	No	Yes	Yes
E-cig.	E-cig.	E-cig.	Dual	Tobacco	1	Yes	No	No
E-cig.	E-cig.	E-cig.	Quit	E-cig.	1	No	No	Yes
E-cig.	E-cig.	E-cig.	Quit	Quit	7	No	Yes	Yes
E-cig.	E-cig.	Dual	Tobacco	Tobacco	2	Yes	No	No
E-cig.	E-cig.	Dual	E-cig.	E-cig.	1	Yes	No	Yes
E-cig.	E-cig.	Dual	Dual	E-cig.	1	Yes	No	Yes
E-cig.	E-cig.	Dual	Dual	Dual	1	Yes	No	No
E-cig.	E-cig.	Quit	Tobacco	Tobacco	1	Yes	No	No
E-cig.	E-cig.	Quit	Quit	Tobacco	2	Yes	No	No
E-cig.	E-cig.	Quit	Quit	Quit	10	No	Yes	Yes
E-cig.	Dual	Tobacco	Tobacco	Tobacco	6	Yes	No	No
E-cig.	Dual	Tobacco	E-cig.	E-cig.	2	Yes	No	Yes
E-cig.	Dual	Tobacco	E-cig.	Dual	1	Yes	No	No
E-cig.	Dual	Tobacco	Quit	Quit	1	Yes	Yes	Yes

Baseline	12 months	24 months	4 years	6 years	N. of subjects	Switched Group	Quit all use	Quit Tobacco smoking
E-cig.	Dual	E-cig.	Tobacco	Quit	1	Yes	Yes	Yes
E-cig.	Dual	E-cig.	E-cig.	E-cig.	3	Yes	No	Yes
E-cig.	Dual	E-cig.	E-cig.	Dual	1	Yes	No	No
E-cig.	Dual	E-cig.	Quit	Quit	1	Yes	Yes	Yes
E-cig.	Dual	Dual	Tobacco	Tobacco	2	Yes	No	No
E-cig.	Dual	Dual	E-cig.	Dual	1	Yes	No	No
E-cig.	Dual	Dual	Dual	Dual	5	Yes	No	No
E-cig.	Dual	Quit	Quit	Quit	1	Yes	Yes	Yes
E-cig.	Quit	Tobacco	Tobacco	Tobacco	2	Yes	No	No
E-cig.	Quit	Tobacco	Tobacco	Quit	1	Yes	Yes	Yes
E-cig.	Quit	Tobacco	Quit	Quit	2	Yes	Yes	Yes
E-cig.	Quit	E-cig.	E-cig.	E-cig.	1	No	No	Yes
E-cig.	Quit	E-cig.	Quit	Quit	1	No	Yes	Yes
E-cig.	Quit	Dual	Tobacco	Tobacco	1	Yes	No	No
E-cig.	Quit	Quit	E-cig.	E-cig.	1	No	No	Yes
E-cig.	Quit	Quit	Quit	Quit	25	No	Yes	Yes
Dual	Tobacco	Tobacco	Tobacco	Tobacco	71	Yes	No	No
Dual	Tobacco	Tobacco	Tobacco	E-cig.	1	Yes	No	Yes
Dual	Tobacco	Tobacco	Tobacco	Dual	1	Yes	No	No
Dual	Tobacco	Tobacco	Tobacco	Quit	6	Yes	Yes	Yes
Dual	Tobacco	Tobacco	E-cig.	E-cig.	1	Yes	No	Yes
Dual	Tobacco	Tobacco	E-cig.	Quit	1	Yes	Yes	Yes
Dual	Tobacco	Tobacco	Dual	Tobacco	3	Yes	No	No
Dual	Tobacco	Tobacco	Dual	E-cig.	1	Yes	No	Yes
Dual	Tobacco	Tobacco	Dual	Dual	3	Yes	No	No
Dual	Tobacco	Tobacco	Quit	Dual	1	Yes	No	No
Dual	Tobacco	Tobacco	Quit	Quit	10	Yes	Yes	Yes
Dual	Tobacco	E-cig.	E-cig.	Quit	1	Yes	Yes	Yes
Dual	Tobacco	E-cig.	Quit	Quit	1	Yes	Yes	Yes
Dual	Tobacco	Dual	Tobacco	Tobacco	2	Yes	No	No
Dual	Tobacco	Dual	E-cig.	E-cig.	2	Yes	No	Yes
Dual	Tobacco	Dual	Dual	Tobacco	1	Yes	No	No
Dual	Tobacco	Dual	Dual	E-cig.	1	Yes	No	Yes
Dual	Tobacco	Dual	Dual	Dual	3	Yes	No	No
Dual	Tobacco	Quit	E-cig.	E-cig.	1	Yes	No	Yes
Dual	Tobacco	Quit	Quit	Tobacco	1	Yes	No	No
Dual	Tobacco	Quit	Quit	Quit	2	Yes	Yes	Yes
Dual	E-cig.	Tobacco	Tobacco	Tobacco	2	Yes	No	No
Dual	E-cig.	Tobacco	E-cig.	E-cig.	2	Yes	No	Yes
Dual	E-cig.	E-cig.	E-cig.	E-cig.	12	Yes	No	Yes
Dual	E-cig.	E-cig.	Quit	Quit	1	Yes	Yes	Yes
Dual	E-cig.	Dual	E-cig.	E-cig.	1	Yes	No	Yes
Dual	E-cig.	Dual	Dual	E-cig.	1	Yes	No	Yes

Baseline	12 months	24 months	4 years	6 years	N. of subjects	Switched Group	Quit all use	Quit Tobacco smoking
Dual	E-cig.	Dual	Dual	Quit	1	Yes	Yes	Yes
Dual	E-cig.	Quit	Quit	Quit	3	Yes	Yes	Yes
Dual	Dual	Tobacco	Tobacco	Tobacco	12	Yes	No	No
Dual	Dual	Tobacco	E-cig.	Quit	1	Yes	Yes	Yes
Dual	Dual	Tobacco	Quit	Tobacco	1	Yes	No	No
Dual	Dual	E-cig.	Tobacco	Tobacco	1	Yes	No	No
Dual	Dual	E-cig.	E-cig.	E-cig.	5	Yes	No	Yes
Dual	Dual	E-cig.	E-cig.	Dual	1	Yes	No	No
Dual	Dual	E-cig.	Quit	Quit	1	Yes	Yes	Yes
Dual	Dual	Dual	Tobacco	Tobacco	5	Yes	No	No
Dual	Dual	Dual	E-cig.	E-cig.	1	Yes	No	Yes
Dual	Dual	Dual	Dual	E-cig.	1	Yes	No	Yes
Dual	Dual	Dual	Dual	Dual	14	No	No	No
Dual	Dual	Dual	Dual	Quit	2	No	Yes	Yes
Dual	Dual	Quit	E-cig.	E-cig.	1	Yes	No	Yes
Dual	Dual	Quit	Dual	Dual	1	No	No	No
Dual	Dual	Quit	Quit	Quit	5	No	Yes	Yes
Dual	Quit	Tobacco	Tobacco	Tobacco	3	Yes	No	No
Dual	Quit	Tobacco	Tobacco	Quit	1	Yes	Yes	Yes
Dual	Quit	Tobacco	Dual	Tobacco	1	Yes	No	No
Dual	Quit	Tobacco	Dual	Dual	1	Yes	No	No
Dual	Quit	E-cig.	E-cig.	E-cig.	1	Yes	No	Yes
Dual	Quit	E-cig.	Quit	Quit	1	Yes	Yes	Yes
Dual	Quit	Quit	Tobacco	Tobacco	2	Yes	No	No
Dual	Quit	Quit	Dual	Tobacco	1	Yes	No	No
Dual	Quit	Quit	Quit	Tobacco	1	Yes	No	No
Dual	Quit	Quit	Quit	Quit	14	No	Yes	Yes

Tobacco: Tobacco smoking only; E-cig.: Electronic cigarettes use only; Dual: Dual use, both tobacco and e-cigarettes.