

World Journal of *Clinical Cases*

World J Clin Cases 2019 October 6; 7(19): 2916-3167



REVIEW

- 2916 DNA methylation detection methods used in colorectal cancer
Zhan YX, Luo GH

ORIGINAL ARTICLE**Case Control Study**

- 2930 Expression and predictive value of miR-489 and miR-21 in melanoma metastasis
Mo H, Guan J, Yuan ZC, Lin X, Wu ZJ, Liu B, He JL

Observational Study

- 2942 Association of stiff-person syndrome with autoimmune endocrine diseases
Lee YY, Chen IW, Chen ST, Wang CC

- 2953 Hyperthyroid heart disease in pregnancy: Retrospective analysis of a case series and review of the literature
Shan D, Bai Y, Chen QH, Wu YX, Chen Q, Hu YY

- 2963 Changes of serum inflammatory factors and miR-145 expression in patients with osteoarthritis before and after treatment and their clinical value
Wang XZ, Li WX

Prospective Study

- 2976 Immediate muscle strengthening by an end-effector type gait robot with reduced real-time use of leg muscles: A case series and review of literature
Hwang CH

Randomized Clinical Trial

- 2986 Comparison of perceived pain and patients' satisfaction with traditional local anesthesia and single tooth anesthesia: A randomized clinical trial
Al-Obaida MI, Haider M, Hashim R, AlGheriri W, Celur SL, Al-Saleh SA, Al-Madi EM

SYSTEMATIC REVIEW

- 2995 Treatment of laryngopharyngeal reflux disease: A systematic review
Lechien JR, Mouawad F, Barillari MR, Nacci A, Khoddami SM, Enver N, Raghunandhan SK, Calvo-Henriquez C, Eun YG, Saussez S

CASE REPORT

- 3012 Keratoconus in a patient with Alport syndrome: A case report
Moshirfar M, Skanchy DF, Gomez AT, Ronquillo YC, Buckner B, Hoopes PC

- 3018** Successful multidisciplinary clinical approach and molecular characterization by whole transcriptome sequencing of a cardiac myxofibrosarcoma: A case report
Saponara M, Indio V, Pizzi C, Serban ED, Urbini M, Astolfi A, Paolisso P, Suarez SM, Nannini M, Pacini D, Agostini V, Leone O, Ambrosini V, Tarantino G, Fanti S, Niro F, Buia F, Attinà D, Pantaleo MA
- 3027** Laparoscopic hysterectomy as optimal approach for 5400 grams uterus with associated polycythemia: A case report
Macciò A, Chiappe G, Lavra F, Sanna E, Nieddu R, Madeddu C
- 3033** Malignant sweat gland tumor of breast arising in pre-existing benign tumor: A case report
An JK, Woo JJ, Hong YO
- 3039** Bronchobiliary fistula after ramucirumab treatment for advanced gastric cancer: A case report
Kim HB, Na YS, Lee HJ, Park SG
- 3047** Severe heterotopic ossification in a seronegative spondyloarthritis patient after cervical Bryan disc arthroplasty: A case report
Huang CW, Tang CL, Pan HC, Tzeng CY, Tsou HK
- 3055** Underlying IgM heavy chain amyloidosis in treatment-refractory IgA nephropathy: A case report
Wu HT, Wen YB, Ye W, Liu BY, Shen KN, Gao RT, Li MX
- 3062** Diagnosis of myocardial infarction with nonobstructive coronary arteries in a young man in the setting of acute myocardial infarction after endoscopic retrograde cholangiopancreatography: A case report
Li D, Li Y, Wang X, Wu Y, Cui XY, Hu JQ, Li B, Lin Q
- 3069** Hemophagocytic lymphohistiocytosis complicated by polyserositis: A case report
Zhu P, Ye Q, Li TH, Han T, Wang FM
- 3074** Hair regrowth following fecal microbiota transplantation in an elderly patient with alopecia areata: A case report and review of the literature
Xie WR, Yang XY, Xia HHX, Wu LH, He XX
- 3082** How should congenital absence of cruciate ligaments be treated? A case report and literature review
Lu R, Zhu DP, Chen N, Sun H, Li ZH, Cao XW
- 3090** Kaposi's sarcoma manifested as lower gastrointestinal bleeding in a HIV/HBV-co-infected liver cirrhosis patient: A case report
Zhou QH, Guo YZ, Dai XH, Zhu B
- 3098** Primary renal synovial sarcoma: A case report
Cai HJ, Cao N, Wang W, Kong FL, Sun XX, Huang B
- 3104** Type I neurofibromatosis with spindle cell sarcoma: A case report
Zhang Y, Chao JJ, Liu XF, Qin SK

- 3111** Primary hypoparathyroidism accompanied by rhabdomyolysis induced by infection: A case report
Ding LN, Wang Y, Tian J, Ye LF, Chen S, Wu SM, Shang WB
- 3120** Effects of combined rTMS and visual feedback on the rehabilitation of supernumerary phantom limbs in a patient with spinal cord injury: A case report
Lu YS, Tong P, Guo TC, Ding XH, Zhang S, Zhang XJ
- 3126** Clear cell sarcoma of soft tissue in pleural cavity: A case report
Chen YT, Yang Z, Li H, Ni CH
- 3132** Primary hyperparathyroidism in a woman with multiple tumors: A case report
Hui CC, Zhang X, Sun JR, Deng DT
- 3138** Gastric adenocarcinoma mimicking a submucosal tumor: A case report
Cheng XL, Liu H
- 3145** Hypereosinophilia, mastectomy, and nephrotic syndrome in a male patient: A case report
Wu J, Li P, Chen Y, Yang XH, Lei MY, Zhao L
- 3153** Flapless immediate implant placement into fresh molar extraction socket using platelet-rich fibrin: A case report
Sun XL, Mudalal M, Qi ML, Sun Y, Du LY, Wang ZQ, Zhou YM
- 3160** Advanced primary amelanotic malignant melanoma of the esophagus: A case report
Zhang RX, Li YY, Liu CJ, Wang WN, Cao Y, Bai YH, Zhang TJ

ABOUT COVER

Editorial Board Member of *World Journal of Clinical Cases*, Enver Zerem, MD, PhD, Professor, Department of Medical Science, Academy of Sciences and Arts of Bosnia and Herzegovina, University Clinical Centre Tuzla, Tuzla 75000, Bosnia and Herzegovina

AIMS AND SCOPE

The primary aim of *World Journal of Clinical Cases (WJCC, World J Clin Cases)* is to provide scholars and readers from various fields of clinical medicine with a platform to publish high-quality clinical research articles and communicate their research findings online.

WJCC mainly publishes case reports, case series, and articles reporting research results and findings obtained in the field of clinical medicine and covering a wide range of topics including diagnostic, therapeutic, and preventive modalities.

INDEXING/ABSTRACTING

The *WJCC* is now indexed in PubMed, PubMed Central, Science Citation Index Expanded (also known as SciSearch®), and Journal Citation Reports/Science Edition. The 2019 Edition of Journal Citation Reports cites the 2018 impact factor for *WJCC* as 1.153 (5-year impact factor: N/A), ranking *WJCC* as 99 among 160 journals in Medicine, General and Internal (quartile in category Q3).

RESPONSIBLE EDITORS FOR THIS ISSUE

Responsible Electronic Editor: *Yan-Xia Xing*
 Proofing Production Department Director: *Xiang Li*

NAME OF JOURNAL

World Journal of Clinical Cases

ISSN

ISSN 2307-8960 (online)

LAUNCH DATE

April 16, 2013

FREQUENCY

Semimonthly

EDITORS-IN-CHIEF

Dennis A Bloomfield, Bao-Gan Peng, Sandro Vento

EDITORIAL BOARD MEMBERS

<https://www.wjnet.com/2307-8960/editorialboard.htm>

EDITORIAL OFFICE

Jin-Lei Wang, Director

PUBLICATION DATE

October 6, 2019

COPYRIGHT

© 2019 Baishideng Publishing Group Inc

INSTRUCTIONS TO AUTHORS

<https://www.wjnet.com/bpg/gerinfo/204>

GUIDELINES FOR ETHICS DOCUMENTS

<https://www.wjnet.com/bpg/GerInfo/287>

GUIDELINES FOR NON-NATIVE SPEAKERS OF ENGLISH

<https://www.wjnet.com/bpg/gerinfo/240>

PUBLICATION MISCONDUCT

<https://www.wjnet.com/bpg/gerinfo/208>

ARTICLE PROCESSING CHARGE

<https://www.wjnet.com/bpg/gerinfo/242>

STEPS FOR SUBMITTING MANUSCRIPTS

<https://www.wjnet.com/bpg/GerInfo/239>

ONLINE SUBMISSION

<https://www.f6publishing.com>

Successful multidisciplinary clinical approach and molecular characterization by whole transcriptome sequencing of a cardiac myxofibrosarcoma: A case report

Maristella Saponara, Valentina Indio, Carmine Pizzi, Elena-Daniela Serban, Milena Urbini, Annalisa Astolfi, Pasquale Paolisso, Sofia Martin Suarez, Margherita Nannini, Davide Pacini, Valentina Agostini, Ornella Leone, Valentina Ambrosini, Giuseppe Tarantino, Stefano Fanti, Fabio Niro, Francesco Buia, Domenico Attinà, Maria Abbondanza Pantaleo

ORCID number: Maristella Saponara (0000-0003-0715-171X); Valentina Indio (0000-0002-8854-3821); Carmine Pizzi (0000-0002-4048-675X); Elena-Daniela Serban (0000-0002-2600-614X); Milena Urbini (0000-0002-3364-9098); Annalisa Astolfi (0000-0002-2732-0747); Pasquale Paolisso (0000-0002-7017-778X); Sofia Martin Suarez (0000-0003-4627-4958); Margherita Nannini (0000-0002-2103-1960); Davide Pacini (0000-0002-4298-3792); Valentina Agostini (0000-0001-5540-2371); Ornella Leone (0000-0001-6412-3294); Valentina Ambrosini (0000-0002-5008-5351); Giuseppe Tarantino (0000-0002-6078-6856); Stefano Fanti (0000-0003-1486-2624); Fabio Niro (0000-0001-9696-1022); Francesco Buia (0000-0002-8038-6788); Domenico Attinà (0000-0001-6055-5313); Maria Abbondanza Pantaleo (0000-0002-0177-6957).

Author contributions: Saponara M, Serban E and Pizzi C conceived and wrote the paper, performed clinical examination and collected data; Nannini M and Paolisso P contributed to manuscript draft and follow-up data collection; Suarez SM and Pacini D performed surgery; Agostini V and Leone O performed the histologic and pathologic examination of the

Maristella Saponara, Margherita Nannini, Maria Abbondanza Pantaleo, Department of Specialized, Experimental and Diagnostic Medicine, Medical Oncology Unit, Sant'Orsola-Malpighi Hospital, University of Bologna, Bologna 40138, Italy

Valentina Indio, Milena Urbini, Annalisa Astolfi, Giuseppe Tarantino, Maria Abbondanza Pantaleo, "Giorgio Prodi" Cancer Research Center, University of Bologna, Bologna 40138, Italy

Carmine Pizzi, Pasquale Paolisso, Department of Specialized, Experimental and Diagnostic Medicine, Cardiology and Transplantation Unit, Sant'Orsola-Malpighi Hospital, University of Bologna, Bologna 40138, Italy

Elena-Daniela Serban, Valentina Agostini, Ornella Leone, Department of Pathology, Cardiovascular Pathology Unit, Sant'Orsola-Malpighi Hospital, University of Bologna, Bologna 40138, Italy

Sofia Martin Suarez, Davide Pacini, Departments of Cardiovascular Surgery and Transplantation, Sant'Orsola-Malpighi Hospital, University of Bologna, Bologna 40138, Italy

Valentina Ambrosini, Stefano Fanti, Department of Specialized, Experimental and Diagnostic Medicine, Nuclear Medicine Unit, Sant'Orsola-Malpighi Hospital, University of Bologna, Bologna 40138, Italy

Fabio Niro, Francesco Buia, Domenico Attinà, Department of Specialized, Experimental and Diagnostic Medicine, Radiology Unit, Sant'Orsola-Malpighi Hospital, University of Bologna, Bologna 40138, Italy

Corresponding author: Maristella Saponara, MD, Academic Research, Department of Specialized, Experimental and Diagnostic Medicine, Medical Oncology Unit, Sant'Orsola-Malpighi Hospital, University of Bologna, Via Massarenti 9, Bologna 40138, Italy.

maristella.saponara@unibo.it

Telephone: +39-51-2144769

Fax: +39-51-6363815

Abstract

BACKGROUND

Cardiac tumors are rare and complex entities. Surgery represents the cornerstone

surgical tissue and have been involved in drafting figures; Indio V, Urbini M, Astolfi A and Tarantino G performed the whole transcriptome sequencing of the surgical tissue and its bioinformatic analysis and have been involved in drafting figures; Ambrosini V, Fanti S, Niro F, Buia F and Attinà D performed PET-CT and CT imaging and have been involved in drafting figures; Pantaleo MA contributed to concept and revised the manuscript; All authors read and approved the final version of the manuscript.

Informed consent statement:

Informed written consent was obtained from the patient for publication of this report and any accompanying images.

CARE Checklist (2016) statement:

The authors have read the CARE Checklist (2016), and the manuscript was prepared and revised according to the CARE Checklist (2016).

Open-Access: This article is an open-access article which was selected by an in-house editor and fully peer-reviewed by external reviewers. It is distributed in accordance with the Creative Commons Attribution Non Commercial (CC BY-NC 4.0) license, which permits others to distribute, remix, adapt, build upon this work non-commercially, and license their derivative works on different terms, provided the original work is properly cited and the use is non-commercial. See: <http://creativecommons.org/licenses/by-nc/4.0/>

Manuscript source: Unsolicited manuscript

Received: April 8, 2019

Peer-review started: April 8, 2019

First decision: June 12, 2019

Revised: June 16, 2019

Accepted: July 27, 2019

Article in press: July 27, 2019

Published online: October 6, 2019

P-Reviewer: Barik R, Kharlamov AN, Petix NR

S-Editor: Cui LJ

L-Editor: Filipodia

E-Editor: Liu JH



of therapy, while the role of adjuvant treatment remains unclear and, in case of relapse or metastatic disease, the prognosis is very poor. Lack of prospective, randomized clinical trials hinders the generation of high level evidence for the optimal diagnostic workup and multimodal treatment of cardiac sarcomas. Herein, we describe the multidisciplinary clinical management and molecular characterization of a rare case of cardiac myxofibrosarcoma in an elderly woman.

CASE SUMMARY

A 73-year-old woman presented signs and symptoms of acute left-sided heart failure. Imaging examination revealed a large, left atrial mass. With suspicion of a myxoma, she underwent surgery, and symptoms were promptly relieved. Histology showed a cardiac myxofibrosarcoma, a rare histotype of cardiac sarcoma. Eight months later, disease unfortunately relapsed, and after a multidisciplinary discussion, a chemotherapy with doxorubicin and then gemcitabine was started, achieving partial radiologic and complete metabolic response, which was maintained up to 2 years and is still present. This report is focused on the entire clinical path of our patient from diagnosis to follow-up, through surgery and strategies adopted at relapse. Moreover, due to their rarity, very little is known about the molecular landscape of myxofibrosarcomas. Thus, we also performed and described preliminary genome analysis of the tumor tissue to get further insight on mechanisms involved in tumor growth, and to possibly unveil new clinically actionable targets.

CONCLUSION

We report a case of cardiac myxofibrosarcoma that achieved a very good prognosis due to an integrated surgical, cardiac and oncologic treatment strategy.

Key words: Cardiac sarcoma; Myxofibrosarcoma; Whole transcriptome sequencing; Doxorubicin; Gemcitabine; Case report

©The Author(s) 2019. Published by Baishideng Publishing Group Inc. All rights reserved.

Core tip: We present the case of an elderly woman affected by myxofibrosarcoma of the left atrium, a rare histotype of cardiac sarcoma. She underwent surgery, however disease unfortunately recurred. Therefore, she started first and second line chemotherapy with doxorubicin and then gemcitabine, obtaining a good and durable radiologic response and a complete metabolic response. An accurate histologic description is reported, and molecular characterization of the tumor, by whole transcriptome sequencing, is also encompassed. This is done in order to better characterize this rare cancer, and to possibly identify pathognomonic molecular events or gene expression profiles shared with other sarcomas amenable for targeted medical therapy.

Citation: Saponara M, Indio V, Pizzi C, Serban ED, Urbini M, Astolfi A, Paolisso P, Suarez SM, Nannini M, Pacini D, Agostini V, Leone O, Ambrosini V, Tarantino G, Fanti S, Niro F, Buia F, Attinà D, Pantaleo MA. Successful multidisciplinary clinical approach and molecular characterization by whole transcriptome sequencing of a cardiac myxofibrosarcoma: A case report. *World J Clin Cases* 2019; 7(19): 3018-3026

URL: <https://www.wjgnet.com/2307-8960/full/v7/i19/3018.htm>

DOI: <https://dx.doi.org/10.12998/wjcc.v7.i19.3018>

INTRODUCTION

Primary cardiac tumors are a rare entity, being predominantly benign. Only 25% are malignant, with sarcomas accounting for most of them^[1]. The clinical presentation depends on tumor size and anatomical location rather than on histological type. It varies from symptoms of congestive heart failure to thromboembolism and arrhythmias^[2].

We report the case of an elderly woman who presented signs and symptoms of acute left-sided heart failure caused by a myxofibrosarcoma of the left atrium, which is a rare histotype of cardiac sarcoma.

The molecular characterization of the tumor, by whole transcriptome sequencing, is also encompassed.

CASE PRESENTATION

Chief complaints and history of present illness

A 73-year-old woman presented dyspnea on exertion, paroxysmal nocturnal dyspnea and cough.

History of past illness

She had a history of arterial hypertension, dyslipidemia and diabetes mellitus.

Personal and family history

The family history did not reveal any remarkable information.

Physical examination upon admission

Physical examination revealed signs and symptoms of acute left-sided heart failure, particularly fatigue and breathing difficulty, whereas no evident signs of deep vein thrombosis were observed.

Imaging examination

A chest X-ray showed signs of pulmonary edema. In order to exclude a pulmonary thromboembolism, angio-computed tomography (CT) was performed and results were negative, instead showing a left atrial mass. Two-dimensional transthoracic echocardiography (TTE) showed an enlarged left atrium and severe mitral valve stenosis due to a mobile, round mass (Video). Transesophageal echocardiography (TEE) confirmed a large (46 mm × 32 mm), ovoid and heterogeneous mass, moving with cardiac cycle, and attached with a broad stalk to the mitral posterior leaflet.

FINAL DIAGNOSIS

Due to echographic features and location, the mass was thought to be a myxoma, and surgery was planned. Upon macroscopic examination, the mass was made up of solid, greyish tissue. Microscopically, the tumor was composed of a uniform proliferation of spindle-shaped cells with medium cellularity, mild to moderate pleomorphism, and elongated hyperchromatic nuclei. The background was predominantly myxoid and to a lesser extent fibrous, with prominent vascularization (Figure 1). Immunohistochemistry (IHC) revealed diffuse positive immunoreactivity for vimentin, as well as focal smooth muscle actin. Desmin, caldesmon, CD34, S-100 protein, CDK4, calretinin, wide-spectrum cytokeratin, and epithelial membrane antigen (EMA) were negative. The Ki67 proliferation index was 35%. Therefore, primary cardiac myxofibrosarcoma was diagnosed [Grade 2 according to the NCI grading system, and according to the FNCLCC grading system: Tumor differentiation = 2, mitotic count = 1 (3/10 HPF), tumor necrosis = 1 (< 10%), total score = 4] with microscopically residual disease.

In order to better characterize this rare cancer and to explore molecular events that may be amenable for targeted medical therapy, whole-Transcriptome Paired-End RNA Sequencing analysis was performed.

Total RNA was extracted with the RecoverAll™ Total Nucleic Acid Isolation Kit (Thermo Fisher Scientific, Waltham, MA, United States) from FFPE tumor specimens of the myxofibrosarcoma case, and from five intimal sarcomas and two angiosarcomas. cDNA libraries were synthesized from 100 ng total RNA with TruSeq RNA Exome (Illumina, San Diego, CA, United States). Briefly, cDNA libraries were synthesized from fragmented RNA, ligated to paired-end sequencing adapters and amplified, then coding exon sequences were captured by hybridization to a pool of exonic probes. WTS libraries were quality-checked and sized with Agilent DNA 7500 chips on the Bioanalyzer 2100 (Agilent Technologies, Taiwan), then quantified using a fluorometric assay (QuantIT Picogreen assay; Life Technologies, Carlsbad, CA, United States). Paired-end libraries were sequenced at 2 × 80 bp using Illumina Sequencing by synthesis technology on a NextSeq500 instrument (Illumina, San Diego, CA, United States) according to the manufacturer's recommendations.

After demultiplexing and adapter trimming, the paired-end reads were mapped with the pipeline TopHat2/Bowtie2 (<https://ccb.jhu.edu>) on the human reference genome hg38 (<http://genome.ucsc.edu>). Single nucleotide variants and indels were called with SNVMix2 (<https://shahlab.ca>) and GATK HaplotypeCaller ([!\[\]\(eabd9f9ababee93effadc3b380fe65fd_img.jpg\) WJCC | <https://www.wjcn.net>](https://soft-</p></div><div data-bbox=)

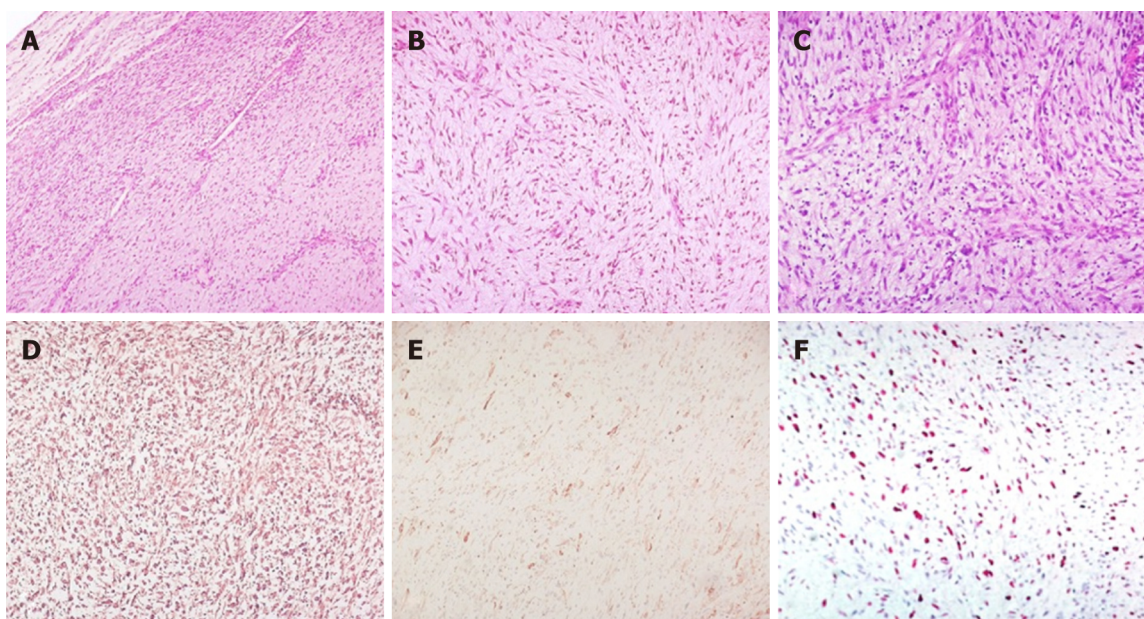


Figure 1 Histology of the cardiac mass showing a uniform proliferation of spindle cells on a collagenous myxoid background, with medium cellularity, mild to moderate pleomorphism and prominent vascularization. Haematoxylin-eosin, original magnification: A: 100 ×; B: 200 ×; C: 400 ×; Diffuse immunostaining for vimentin, D: 200 ×; and multifocal immunostaining for smooth muscle actin, E: 200 ×; Ki-67 labeling index: ca 35% of tumor cells, F: 200 ×.

ware.broadinstitute.org), respectively, and chromosomal rearrangements were investigated with several computational tools including ChimeraScan, Defuse, TopHat-Fusion, FusionMap as previously described^[3]. No specific mutations or molecular alterations of interest for a targeted therapy were found. We therefore decided to perform gene expression profiling analysis to compare the transcriptional landscape of this rare tumor subtype with other cardiac neoplasms, including two angiosarcomas and five intimal sarcomas, whose sequencing data were already available in the laboratory dataset. First, gene expression was quantified for all samples (myxofibrosarcomas, angiosarcomas and intimal sarcomas) using the python package htseq-count (<https://htseq.readthedocs.io>) with the Ensembl release 81 annotation features (<http://www.ensembl.org>) as a reference. Then the R-Bioconductor (<https://www.bioconductor.org>) package edgeR was used to perform data normalization as count per million (cpm). Secondly, a differential expression analysis of angiosarcoma *versus* intimal sarcoma was performed with the R-bioconductor package limma, and the most significant up- or downregulated genes were selected (P -value < 0.01, number of genes = 60). This set of 60 genes represented the specific molecular signature capable of distinguishing between angiosarcomas and intimal sarcomas in terms of gene expression profile (Supplementary Table 1). The 60 gene signature was then employed to classify the myxofibrosarcoma with respect to the other cardiac sarcoma by adopting two different methods: Hierarchical clustering (R-bioconductor package ComplexHeatmap, distance “manhattan”, method “complete”) and principal component analysis (R package prcomp). Both analyses highlighted that the myxofibrosarcoma is closer to angiosarcoma in terms of gene expression profile, as opposed to the intimal sarcoma (Figure 2A-B). We found several genes that are co-expressed in myxofibrosarcomas and angiosarcomas and not in intimal sarcomas, suggesting a putative similarity between myxofibrosarcomas and angiosarcomas, which will prove useful in assigning the appropriate chemotherapy regimen. In addition to the global molecular profile analysis, we also evaluated the expression levels of single genes previously identified as up- or down-regulated in pharmacogenomic studies.

In order to accurately stage the disease, a total body CT scan was performed after surgery, which was negative. Considering the advanced age and comorbidities of the patient, recent heart surgery, macroscopically complete resection and absence of disseminated disease, no further therapy was administered, and a follow-up program was started.

TREATMENT

After 8 mo of negative follow-up, the patient presented dyspnea upon exertion. A CT

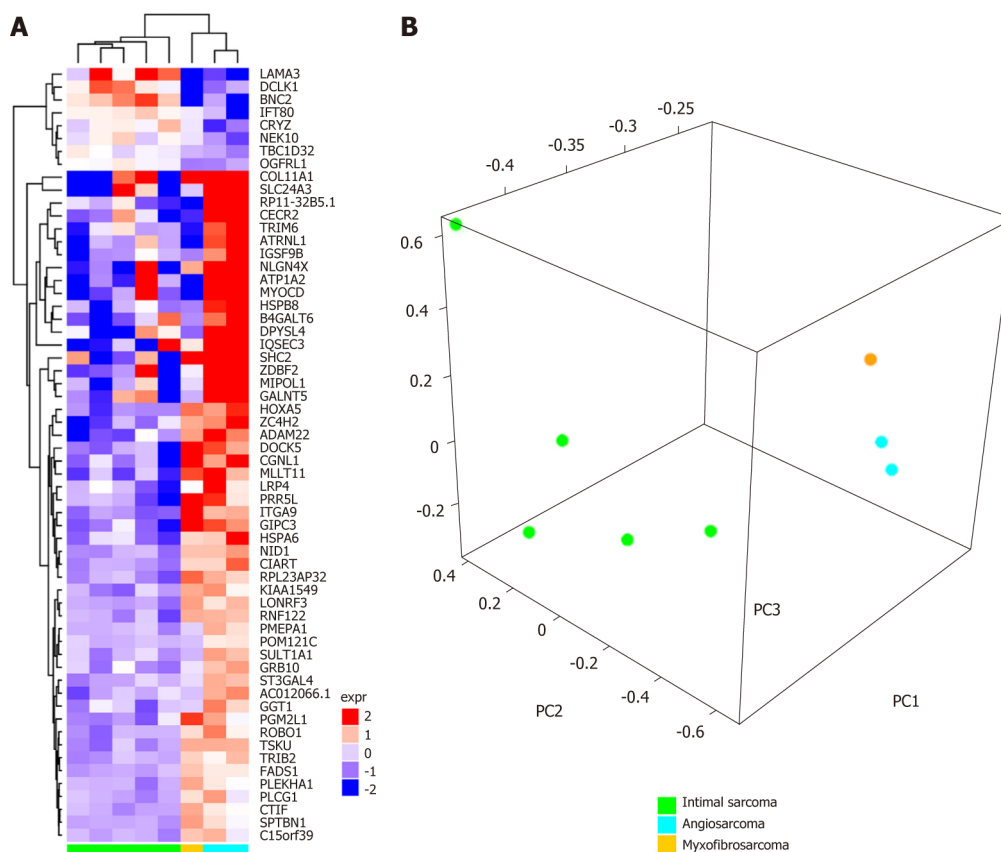


Figure 2 Whole-Transcriptome Sequencing analysis of myxofibrosarcomas (yellow) compared to intimal sarcomas (green) and angiosarcomas (cyan). A: Hierarchical clustering analysis, performed on the specific gene signature, differentially expressed between angiosarcomas and intimal sarcomas, highlight the similarity of myxofibrosarcomas with angiosarcomas; B: Principal component analysis shows the clustering of myxofibrosarcomas closer to angiosarcomas.

scan showed an ovoid mass of 47 mm x 21 mm attached to the mitral posterior leaflet, which was highly suspicious for a local relapse. No other lesions were described. Cardiac magnetic resonance imaging (MRI) confirmed the mass in the left atrium, showing a heterogeneous fluorodeoxyglucose (FDG) uptake (SUVmax = 4.8) at positron-emission tomography (PET)/CT with fluorodeoxyglucose imaging (^{18}F -FDG PET/CT). In order to downsize the tumor and obtain symptom relief, chemotherapy with doxorubicin was administered. After three cycles of doxorubicin, which is the standard treatment in the first line setting for all sarcoma histotypes, cardiac MRI showed a stable disease with complete metabolic response at ^{18}F -FDG PET/CT (Figure 3), and a close follow-up program was planned. However, imaging also showed a thrombus near the tumor, thus a specific anticoagulant therapy was started.

OUTCOME AND FOLLOW UP

Unfortunately, 1 year later, the patient presented neurological symptoms of ischemic stroke likely due to a thrombotic event, despite stability of the oncological disease. Thus, appropriate therapy for stroke and subsequent rehabilitation therapy were set up, while close cardiac tumor surveillance was performed.

Two years after surgery, during the surveillance period, the patient had an episode of acute left-sided heart failure. A TTE showed a size increase of the heart mass, confirmed at cardiac MRI. ^{18}F -FDG PET/CT showed metabolic reactivation of disease with heterogeneous FDG uptake (SUVmax = 3.5). After a multidisciplinary evaluation of the case, surgery was considered too risky, but in order to achieve local and systemic disease control, a second line chemotherapy was planned.

Considering that gene expression profiling findings clustered the disease close to angiosarcoma, which is generally responsive to gemcitabine, we focused on the genes defined by Tooker *et al*^[4] as modulated in relation to gemcitabine resistance and sensitivity. We found several genes that are included in the msigd signature "TOOKER_GEMCITABINE_RESISTANCE_UP" (<https://broadinstitute.org/gsea/msigdb/>) that were downregulated in both myxofibrosarcomas and angiosarcomas, including IFI6, LGALS3, ANXA1 and ASS1 (Figure 4A). Conversely,

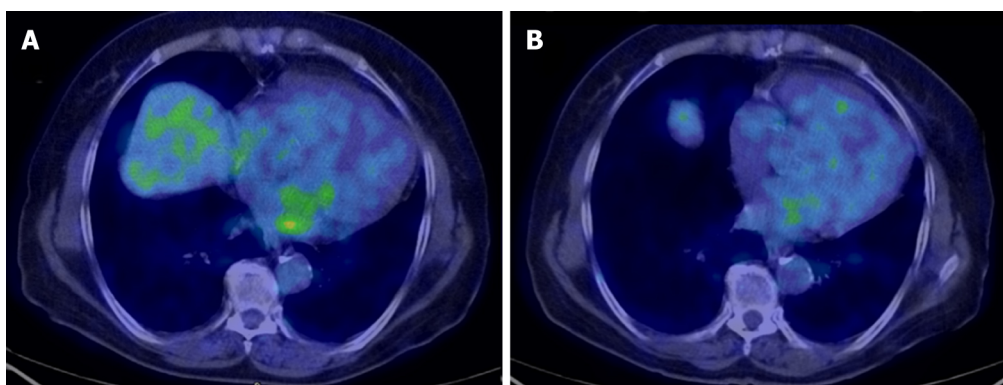


Figure 3 ^{18}F -FDG PET/CT transaxial images of left atrial sarcoma. A: Faint fluorodeoxyglucose uptake at primary staging (SUVmax = 4.8); B: Complete metabolic normalization after three cycles of doxorubicin.

the genes *CYB5A*, *SCD*, *ADD3*, *HSPB1*, *SMS*, *WWTR1* and *RHOB*, belonging to the msigdb signature “*TOOKER_GEMCITABINE_RESISTANCE_DN*” (Figure 4B), appeared upregulated in myxofibrosarcomas and angiosarcomas and not in intimal sarcomas. Taken together, these observations suggested a putative similarity between myxofibrosarcomas and angiosarcomas, also in terms of chemotherapy response. So, we opted for a gemcitabine therapy, which is more promising for such histotypes when compared to other potential second line drugs. Treatment with gemcitabine was therefore started and was well-tolerated. After three cycles, a complete metabolic response at ^{18}F -FDG PET/CT had been obtained, which was confirmed after a further 3 mo of treatment (Figure 5), which is currently ongoing.

DISCUSSION

Cardiac tumors account only for a small fraction of all cardiac masses, mostly represented by pseudo tumors like thrombi, vegetations, abscesses, and aneurysms. Cardiac tumors are mostly represented by benign tumors (75%), with cardiac myxomas being the most common, accounting for nearly half of them. Primary malignant cases account only for 25% of all cardiac tumors, while secondary cardiac tumors, either by metastatic spread or direct invasion, are far more common (40-50 times more frequent). In one series of over 12,000 autopsies, only seven cases of malignant primary cardiac tumors were identified, accounting for an incidence of less than 0.1 percent^[5,6]. Among the primary malignant tumors of the heart, the most frequent are sarcomatous in nature^[7]. All types of sarcomas may be observed in the heart, with a predominance of rhabdomyosarcomas in childhood and angiosarcomas or undifferentiated sarcomas in adulthood. Although rare, myxofibrosarcoma is one of the most common sarcoma subtypes in the elderly, with most lesions arising in the extremities. Origin in other organs, like the heart, is an extraordinary event, and the majority of publications are limited to case reports. Given their rarity and the lack of prospective and randomized clinical trials, the level of evidence for the optimal diagnostic workup and multimodal treatment of primary cardiac sarcomas is very low and not well established to date.

Primary cardiac tumor manifestations are rather nonspecific. They may be either asymptomatic, being incidentally discovered during workup for unrelated problems, or may cause symptoms by obstructing the circulation, interfering with heart valves, directly invading the myocardium, invading the adjacent lung, or embolization. They can rarely manifest with constitutional symptoms like fatigue, anorexia or general malaise. The clinical presentation depends on the tumor size and anatomical location rather than on histological type. A cardiac sarcoma located in the left atrium, as in the presented case, can cause obstruction of the mitral valve with symptoms of mitral stenosis like dyspnea, cough and hemoptysis.

When suspected, the first imaging procedure is echocardiography, specially transesophageal echocardiography, which provides better visualization of the tumor. Echocardiography could sensitively and conveniently detect the presence of an intracardiac tumor mass, and it could well reflect location, extent, attachment, diameter of tumor and its hemodynamic consequences. Cardiac MRI and CT provide more detailed information about the morphology, location, cardiac and extracardiac extent of the mass^[6,8]. Moreover, in case of suspected cardiac malignancies, CT scans are also useful to assess distant metastasis, if any. The role of ^{18}F -FDG PET/CT is also

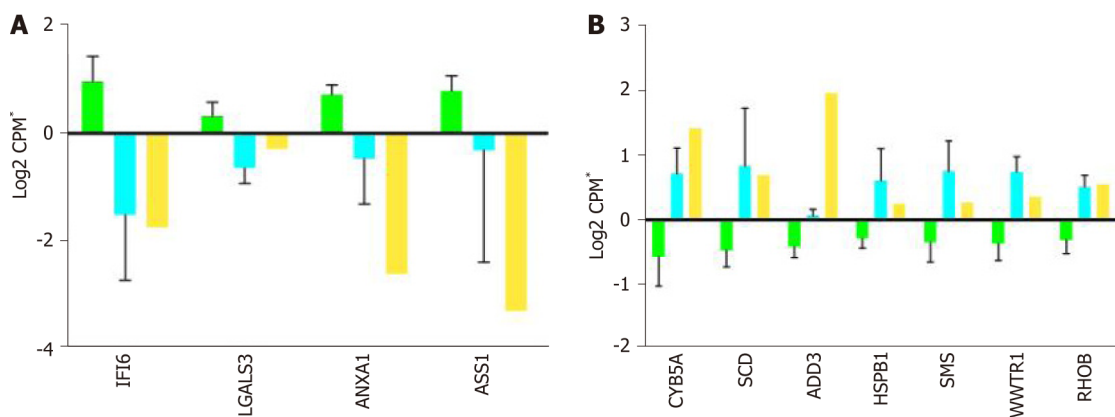


Figure 4 Expression of genes in myxofibrosarcomas (yellow), intimal sarcomas (green) and angiosarcomas (cyan). A: Expression profiles of IFI6, LGALS3, ANXA1 and ASS1 genes defined as up-regulated in gemcitabine resistance by Tooker *et al*^[4]; B: Expression profiles of CYB5A, SCD, ADD3, HSPB1, SMS, WWTR1, and RHOB genes defined as down-regulated in gemcitabine resistance by Tooker *et al*^[4]. Asterisk: Log2 cpm was previously centered by subtracting the average expression value.

being investigated, showing promising results^[9].

The cornerstone of therapy for cardiac tumors is surgery to accomplish complete surgical resection, with negative margins providing the greatest chance for survival. Instead, the role of adjuvant chemotherapy and radiotherapy remains unclear, given the high percentage of cardiac toxicity of these therapies.

Very recently, Sun *et al*^[8] published pooled analyses of primary cardiac myxofibrosarcomas in order to establish their clinical presentations, pathologic features, treatments and outcome patterns, as well as to develop a rationale for the diagnosis and prognostication of this disease. Results revealed that primary cardiac myxofibrosarcoma afflicted relatively young patients, with a mean age of 42 years. The most common cardiopulmonary symptom reported was dyspnea, accounting for 64.3% of cases, and the most common location was the left atrium, which affected 58% of patients. The median survival time was 14 mo, and statistical analyses revealed that primary cardiac myxofibrosarcomas had a high probability of presenting local recurrences and dismal metastases. Major risk factors significantly related to a poor prognosis included tumors ≥ 40 mm in size or with high-grade.

Very little is known about the molecular landscape of myxofibrosarcomas. Unlike other groups of sarcomas with peculiar genetic alterations and simple karyotypes, such as specific KIT mutations in GIST, myxofibrosarcomas seem to be complex and very heterogeneous, lacking specific or recurrent genetic patterns. Some studies evaluated the gene expression profile of myxofibrosarcomas, aiming to identify potentially actionable targets and biomarkers for personalized treatment strategies in a pathology substantially orphan of effective target therapies^[10-12]. Mutations, novel amplifications and copy number alterations have been particularly observed in high grade, metastatic or recurrent myxofibrosarcomas compared with low-grade forms, even if the small case series does not allow for conclusive evaluations.

Herein, we reported a case of primary cardiac myxofibrosarcoma manifesting with dyspnea in an elderly patient. Surgery was initially planned upon the suspicion of a myxoma. Despite the different final diagnosis, removal of the voluminous mass allowed complete symptom relief, and likely positively affected the patient's overall survival together with the multimodality treatment strategy adopted when relapse occurred. In fact, both cardiac and oncologic risk related to a local mass and potential distant spread were promptly recognized and treated. We also performed genome analysis of the tumor tissue to get further insights on mechanisms involved in tumor growth, and to possibly unveil new clinically actionable targets. The most important, yet preliminary, observations concern (1) Confirmation of a considerable complexity in the gene expression profile of myxofibrosarcoma, which could justify the responsiveness to "classical" chemotherapy treatments (such as anthracyclines), and (2) A certain similarity of genomic sequencing between myxofibrosarcomas and angiosarcomas, which could explain similar responsiveness to gemcitabine-based schemes.

According to results reported in the literature, local recurrence rates of myxofibrosarcomas was very high, which is likely related to the peculiar local growth pattern of these tumors, highlighting their aggressive biology and the need for more effective post-treatment strategies^[13]. Early diagnosis of primary cardiac myxofibrosarcomas is also crucial, as it might improve the overall survival and

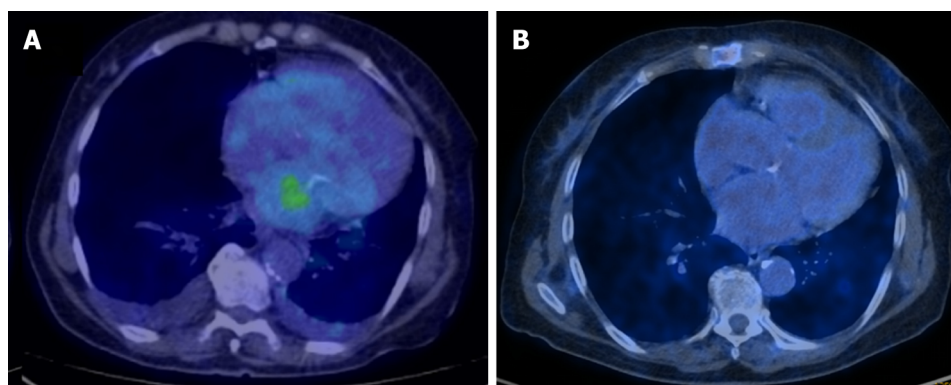


Figure 5 ^{18}F -FDG PET/CT transaxial images of left atrial sarcoma. A: Faint fluorodeoxyglucose uptake of tumor relapse (SUVmax = 3.5); B: Complete metabolic normalization after six cycles of gemcitabine.

improve the quality of life of patients. Both local advanced disease and metastatic disease have poor prognosis. In older retrospective case series, regardless of the type of treatment, most patients died within 12-16.5 mo after initial diagnosis^[5]. In more recent series, survival reaches 38.8 mo or even 53.5 mo, but only for patients who underwent complete resection in referral centers^[14,15]. Patient selection is also crucial to allow for multimodality treatment, including neoadjuvant chemotherapy that seems to enhance resectability, thus translating into improved patient survival.

Currently, 32 mo after initial diagnosis, our patient is in good general clinical condition. She is recovering from the neurological sequelae of the stroke, leading a normal life in relation to her age, and continuing the well-tolerated chemotherapy treatment with gemcitabine with a good disease control, as showed by recent MRI and PET/CT re-evaluations.

CONCLUSION

Our case report may support clinicians facing diagnosis, treatment and counseling of patients affected by this rare tumor. Imaging examination, especially echocardiography, together with histology and immunohistochemistry should be considered during the diagnosis of primary cardiac masses, specifically those that are voluminous in size. In order to confirm clinical suspicion stemming from first level investigations, other exams such as FDG-PET/CT should be considered, and aimed at planning rational surgery strategies to ultimately improve prognosis.

The rarity of disease, with only a few cases reported in the literature, forbids making stronger recommendations. Therefore, the systemic treatment of patients suffering from myxofibrosarcoma has not substantially changed over the years, which is also based on the highly complex genetic changes and the lack of typical genetic fingerprints. As for the most rare diseases, conveying patients affected by primary cardiac myxofibrosarcoma to reference centers may help to aggregate significant preclinical and clinical data in the quest for more sound scientific evidence. A better understanding of biology, features and outcomes will lead to the development of new, targeted therapeutic strategies for this dismal tumor.

REFERENCES

- 1 **Hudzik B**, Miszalski-Jamka K, Glowacki J, Lekston A, Gierlotka M, Zembala M, Polonski L, Gasior M. Malignant tumors of the heart. *Cancer Epidemiol* 2015; **39**: 665-672 [PMID: 26239627 DOI: 10.1016/j.canep.2015.07.007]
- 2 **Pathak R**, Nepal S, Giri S, Ghimire S, Aryal MR. Primary cardiac sarcoma presenting as acute left-sided heart failure. *J Community Hosp Intern Med Perspect* 2014; **4** [PMID: 25147639 DOI: 10.3402/jchimp.v4.23057]
- 3 **Indio V**, Astolfi A, Tarantino G, Urbini M, Patterson J, Nannini M, Saponara M, Gatto L, Santini D, do Valle IF, Castellani G, Remondini D, Fiorentino M, von Mehren M, Brandi G, Biasco G, Heinrich MC, Pantaleo MA. Integrated Molecular Characterization of Gastrointestinal Stromal Tumors (GIST) Harboring the Rare D842V Mutation in PDGFRA Gene. *Int J Mol Sci* 2018; **19** [PMID: 29510530 DOI: 10.3390/ijms19030732]
- 4 **Tooker P**, Yen WC, Ng SC, Negro-Vilar A, Hermann TW. Bexarotene (LGD1069, Targretin), a selective retinoid X receptor agonist, prevents and reverses gemcitabine resistance in NSCLC cells by modulating gene amplification. *Cancer Res* 2007; **67**: 4425-4433 [PMID: 17483357 DOI: 10.1158/0008-5472.CAN-06-4495]

- 5 **Reynen K.** Frequency of primary tumors of the heart. *Am J Cardiol* 1996; **77**: 107 [PMID: [8540447](#) DOI: [10.1016/S0002-9149\(97\)89149-7](#)]
- 6 **Butany J,** Nair V, Naseemuddin A, Nair GM, Catton C, Yau T. Cardiac tumours: diagnosis and management. *Lancet Oncol* 2005; **6**: 219-228 [PMID: [15811617](#) DOI: [10.1016/S1470-2045\(05\)70093-0](#)]
- 7 **Mentzel T,** Calonje E, Wadden C, Camplejohn RS, Beham A, Smith MA, Fletcher CD. Myxofibrosarcoma. Clinicopathologic analysis of 75 cases with emphasis on the low-grade variant. *Am J Surg Pathol* 1996; **20**: 391-405 [PMID: [8604805](#) DOI: [10.1097/00000478-199604000-00001](#)]
- 8 **Sun D,** Wu Y, Liu Y, Yang J. Primary cardiac myxofibrosarcoma: case report, literature review and pooled analysis. *BMC Cancer* 2018; **18**: 512 [PMID: [29720127](#) DOI: [10.1186/s12885-018-4434-2](#)]
- 9 **Saponara M,** Ambrosini V, Nannini M, Gatto L, Astolfi A, Urbini M, Indio V, Fanti S, Pantaleo MA. 18F-FDG-PET/CT imaging in cardiac tumors: illustrative clinical cases and review of the literature. *Ther Adv Med Oncol* 2018; **10**: 1758835918793569 [PMID: [30344650](#) DOI: [10.1177/1758835918793569](#)]
- 10 **Heitzer E,** Sunitsch S, Gilg MM, Lohberger B, Rinner B, Kashofer K, Stündl N, Ulz P, Szkanera J, Leithner A, Liegl-Atzwanger B. Expanded molecular profiling of myxofibrosarcoma reveals potentially actionable targets. *Mod Pathol* 2017; **30**: 1698-1709 [PMID: [28776571](#) DOI: [10.1038/modpathol.2017.94](#)]
- 11 **Okada T,** Lee AY, Qin LX, Agaram N, Mimae T, Shen Y, O'Connor R, López-Lago MA, Craig A, Miller ML, Agius P, Molinelli E, Socci ND, Crago AM, Shima F, Sander C, Singer S. Integrin- α 10 Dependency Identifies RAC and RICTOR as Therapeutic Targets in High-Grade Myxofibrosarcoma. *Cancer Discov* 2016; **6**: 1148-1165 [PMID: [27577794](#) DOI: [10.1158/2159-8290.CD-15-1481](#)]
- 12 **Li CF,** Fang FM, Kung HJ, Chen LT, Wang JW, Tsai JW, Yu SC, Wang YH, Li SH, Huang HY. Downregulated MTAP expression in myxofibrosarcoma: A characterization of inactivating mechanisms, tumor suppressive function, and therapeutic relevance. *Oncotarget* 2014; **5**: 11428-11441 [PMID: [25426549](#) DOI: [10.18632/oncotarget.2552](#)]
- 13 **Sanfilippo R,** Miceli R, Grosso F, Fiore M, Puma E, Pennacchioli E, Barisella M, Sangalli C, Mariani L, Casali PG, Gronchi A. Myxofibrosarcoma: prognostic factors and survival in a series of patients treated at a single institution. *Ann Surg Oncol* 2011; **18**: 720-725 [PMID: [20878245](#) DOI: [10.1245/s10434-010-1341-4](#)]
- 14 **Isambert N,** Ray-Coquard I, Italiano A, Rios M, Kerbrat P, Gauthier M, Blouet A, Chaigneau L, Duffaud F, Piperno-Neumann S, Kurtz JE, Girard N, Collard O, Bompas E, Penel N, Bay JO, Guillemet C, Collin F, Blay JY, Le Cesne A, Thariat J. Primary cardiac sarcomas: a retrospective study of the French Sarcoma Group. *Eur J Cancer* 2014; **50**: 128-136 [PMID: [24135684](#) DOI: [10.1016/j.ejca.2013.09.012](#)]
- 15 **Abu Saleh WK,** Ramlawi B, Shapira OM, Al Jabbari O, Ravi V, Benjamin R, Durand JB, Leja MJ, Blackmon SH, Bruckner BA, Reardon MJ. Improved Outcomes With the Evolution of a Neoadjuvant Chemotherapy Approach to Right Heart Sarcoma. *Ann Thorac Surg* 2017; **104**: 90-96 [PMID: [28189277](#) DOI: [10.1016/j.athoracsur.2016.10.054](#)]



Published By Baishideng Publishing Group Inc
7041 Koll Center Parkway, Suite 160, Pleasanton, CA 94566, USA
Telephone: +1-925-2238242
E-mail: bpgoffice@wjgnet.com
Help Desk: <https://www.f6publishing.com/helpdesk>
<https://www.wjgnet.com>

