


ORIGINAL RESEARCH

Prognosis and cure of long-term cancer survivors: A population-based estimation

Luigino Dal Maso¹  | Chiara Panato¹ | Stefano Guzzinati² | Diego Serraino¹ | Silvia Francisci³ | Laura Botta⁴ | Riccardo Capocaccia¹ | Andrea Tavilla³ | Anna Gigli⁵ | Emanuele Crocetti⁶ | Massimo Rugge^{2,7} | Giovanna Tagliabue⁸ | Rosa Angela Filiberti⁹ | Giuliano Carrozzi¹⁰ | Maria Michiara¹¹ | Stefano Ferretti¹² | Rosaria Cesaraccio¹³ | Rosario Tumino¹⁴ | Fabio Falcini⁶ | Fabrizio Stracci¹⁵ | Antonietta Torrisi¹⁶ | Guido Mazzoleni¹⁷ | Mario Fusco¹⁸ | Stefano Rosso¹⁹ | Francesco Tisano²⁰ | Anna Clara Fanetti²¹ | Giovanna Maria Sini²² | Carlotta Buzzoni^{23,24} | Roberta De Angelis²⁵ | for AIRTUM Working group^{*}

¹Cancer Epidemiology Unit, Centro di Riferimento Oncologico di Aviano (CRO) IRCCS, Aviano, Italy

²Veneto Tumour Registry, Azienda Zero, Padua, Italy

³National Center for Prevention and Health Promotion, Italian National Institute of Health (ISS), Rome, Italy

⁴Evaluative Epidemiology Unit, Department of Preventive and Predictive Medicine, Fondazione IRCCS Istituto Nazionale dei Tumori, Milan, Italy

⁵Institute for Research on Population and Social Policies, National Research Council, Rome, Italy

⁶Romagna Cancer Registry, Istituto Scientifico Romagnolo per lo Studio e la Cura dei Tumori (IRST), IRCCS and Azienda Usl della Romagna, Meldola (Forlì), Italy

⁷Department of Medicine (DIMED), University of Padua, Padua, Italy

⁸Lombardy Cancer Registry-Varese Province, Cancer Registry Unit, Department of Research, Fondazione IRCCS Istituto Nazionale Tumori, Milan, Italy

⁹Liguria Cancer Registry, Clinical Epidemiology, IRCCS Policlinico San Martino, Genova, Italy

¹⁰Modena Cancer Registry, Public Health Department, AUSL Modena, Modena, Italy

¹¹Parma Cancer Registry, Oncology Unit, Azienda Ospedaliera Universitaria di Parma, Parma, Italy

¹²Romagna Cancer Registry - Section of Ferrara. Local Health Unit, University of Ferrara, Ferrara, Italy

¹³North Sardinia Cancer Registry, Azienda Regionale per la Tutela della Salute, Sassari, Italy

¹⁴Cancer Registry, ASP Ragusa, Victoria, Italy

¹⁵Public Health Section, Department of Experimental Medicine, University of Perugia, Perugia, Italy

¹⁶Registro Tumori Integrato Catania-Messina-Siracusa-Enna, Catania, Italy

¹⁷South-Tyrol Tumor Registry, Bolzano, Italy

¹⁸Cancer Registry of ASL Napoli 3 Sud, Napoli, Italy

¹⁹Registro Tumori Piemonte, Provincia di Biella CPO, Biella, Italy

²⁰Cancer Registry of the Province of Siracusa, Local Health Unit of Siracusa, Siracusa, Italy

²¹Sondrio Cancer Registry, Epidemiology unit, ATS della Montagna, Sondrio, Italy

²²Nuoro Cancer Registry, ASSL Nuoro/ATS Sardegna, Nuoro, Italy

²³Tuscany Cancer Registry, Clinical and Descriptive Epidemiology Unit, Cancer Prevention and Research Institute (ISPO), Florence, Italy

^{*}A complete list of the AIRTUM Working group is provided in the Appendix at the end of the manuscript.

This is an open access article under the terms of the Creative Commons Attribution License, which permits use, distribution and reproduction in any medium, provided the original work is properly cited.

© 2019 The Authors. *Cancer Medicine* published by John Wiley & Sons Ltd.

²⁴AIRTUM Database, Florence, Italy

²⁵Department of Oncology and Molecular Medicine, Italian National Institute of Health (ISS), Rome, Italy

Correspondence

Luigino Dal Maso, Cancer Epidemiology Unit, Centro di Riferimento Oncologico di Aviano (CRO) IRCCS, Via Franco Gallini 2, 33081 Aviano (PN), Italy.
Email: epidemiology@cro.it
Stefano Guzzinati, Veneto Tumour Registry, Azienda Zero, Padua, Italy, Passaggio Gaudenzio 1, 35131 Padova, Italy.
Email: registro.tumori@azero.veneto.it

Funding information

This work was supported by the Italian Association of Cancer Research (AIRC, grant number 21879, 16921). The funding source had no active role in study design, collection, analysis and interpretation of data, writing the report, and in the decision to submit the article for publication.

Abstract

Background: Increasing evidence of cure for some neoplasms has emerged in recent years. The study aimed to estimate population-based indicators of cancer cure.

Methods: Information on more than half a million cancer patients aged 15–74 years collected by population-based Italian cancer registries and mixture cure models were used to estimate the life expectancy of fatal tumors (LEFT), proportions of patients with similar death rates of the general population (cure fraction), and time to reach 5-year conditional relative survival (CRS) >90% or 95% (time to cure).

Results: Between 1990 and 2000, the median LEFT increased >1 year for breast (from 8.1 to 9.4 years) and prostate cancers (from 5.2 to 7.4 years). Median LEFT in 1990 was >5 years for testicular cancers (5.8) and Hodgkin lymphoma (6.3) below 45 years of age. In both sexes, it was ≤0.5 years for pancreatic cancers and NHL in 1990 and in 2000. The cure fraction increased 10 percentage points between 1990 and 2000. It was 95% for thyroid cancer in women, 94% for testicular, 75% for prostate, 67% for breast cancers, and <20% for liver, lung, and pancreatic cancers. Time to 5-year CRS >95% was <10 years for testis, thyroid, colon cancers, and melanoma. For breast and prostate cancers, the 5-year CRS >90% was reached in <10 years but a small excess remained for >15 years.

Conclusions: The study findings confirmed that several cancer types are curable. The awareness of the possibility of cancer cure has relevant clinical and social impacts.

KEYWORDS

cancer cure, Italy, population-based cancer registries, prevalence, survival

1 | INTRODUCTION

The number of people living after a cancer diagnosis showed an approximately 3% annual increase in the USA, Italy, and UK.^{1–3} This trend is mainly powered by the increasing number of new diagnoses because of population aging, and improved survival associated with advanced treatments and early diagnosis. Patients living after a cancer diagnosis (ie, prevalent cases) include those currently in treatment; those who have become cancer-free but still have a measurable excess risk of recurrence or death; and patients who can be considered “cured”, as they have reached the same death rates of the general population.⁴ Notably, nearly four million people are expected to be living after a cancer diagnosis in Italy in 2020 (ie, one out of 17 Italians).¹ In addition, patients who were diagnosed since ≥15 years represented one fifth (20%) of all Italian prevalent cases in 2010, and this proportion is projected to reach approximately 40% in 2020.¹ Notwithstanding, relatively few studies have

attempted to categorize prevalent cancer patients according to the probability of being cured.^{4–10}

The aim of the present study was to provide reliable and updated estimates for Italian patients of three indicators that are still lacking in current cancer statistics,^{11,12} that is, long-term survival and cure, according to cancer type, sex, and age. These indicators are meant to provide helpful information to public health operators in treatment evaluation, to oncologists in planning patients' follow-up,^{13–15} to policy makers for an evidence-based planning of financial resources allocation, and, most of all, they could be of special interest to the increasing number of people living after a cancer diagnosis.^{1,16}

2 | MATERIALS AND METHODS

This study used data collected by 8 population-based Italian cancer registries,¹¹ which agreed to participate in the study, with at least 18 years of cancer registration as of 31 December

TABLE 1 Cancer cases (N) and crude incidence rates (CIR), Italian cancer registries areas 1985-2011

Cancer type	ICD10/ICDO3	BOTH SEXES		MEN						WOMEN														
		N	CIR	Age 15-74 years		15-44		45-54		55-64		65-74		Age 15-74 years		15-44		45-54		55-64		65-74		
				N	CIR	N	CIR	N	CIR	N	CIR	N	CIR	N	CIR	N	CIR	N	CIR	N	CIR	N	CIR	N
Oral cavity and pharynx	C01-14	12,536	19.7	9,663	19.7	760	19.7	2,139	3,599	3,165	2,873	5.7	374	562	889	1,048								
Esophagus	C15	4,678	8.0	3,922	8.0	131	8.0	661	1,425	1,705	756	1.5	27	104	243	382								
Stomach	C16	19,407	25.9	12,701	25.9	551	25.9	1,438	3,895	6,817	6,706	13.2	437	843	1,795	3,631								
Colon	C18	41,089	47.3	23,228	47.3	860	47.3	2,565	7,403	12,400	17,861	35.2	838	2,489	5,530	9,004								
Rectum	C19-20	17,782	22.4	10,995	22.4	418	22.4	1,417	3,695	5,465	6,787	13.4	328	1,068	2,160	3,231								
Liver	C22	16,140	24.8	12,195	24.8	316	24.8	1,287	3,967	6,625	3,945	7.8	107	286	948	2,604								
Gallbladder	C23-24	5,119	4.7	2,286	4.7	47	4.7	233	679	1,327	2,833	5.6	54	254	810	1,715								
Pancreas	C25	12,844	15.0	7,378	15.0	237	15.0	918	2,400	3,823	5,466	10.8	168	480	1,539	3,279								
Larynx	C32	9,566	18.0	8,831	18.0	247	18.0	1,419	3,504	3,661	735	1.4	32	124	276	303								
Lung	C33-34	62,608	103.5	50,802	103.5	961	103.5	5,044	16,949	27,848	11,806	23.2	526	1,635	3,569	6,076								
Skin melanoma	C43	13,544	13.8	6,753	13.8	1,746	13.8	1,435	1,769	1,803	6,791	13.4	2,507	1,408	1,429	1,447								
Mesothelioma	C45	2,324	3.6	1,759	3.6	48	3.6	200	582	929	565	1.1	23	79	168	295								
Connective tissue	C47,49	2,898	3.3	1,596	3.3	382	3.3	296	423	495	1,302	2.6	337	228	323	414								
Breast	C50	80,224	1.3	616	1.3						79,608	156.7	11,823	20,449	23,348	23,988								
Cervix uteri	C53	5,125									5,125	10.1	1,600	1,257	1,153	1,115								
Corpus uteri	C54	12,735									12,735	25.1	652	2,410	4,777	4,896								
Ovary	C56	8,475									8,475	16.7	1,131	1,863	2,556	2,925								
Prostate	C61	43,623	88.8	43,623	88.8	54	88.8	1,766	12,868	28,935														
Testicular	C62	3,421	7.0	3,421	7.0	2,772	7.0	408	162	79														
Kidney	C64-66,68	17,552	24.7	12,125	24.7	826	24.7	1,826	4,109	5,364	5,427	10.7	435	783	1,652	2,557								
Bladder	C67, D090, D303, D414	32,209	54.3	26,649	54.3	1,017	54.3	2,820	8,387	14,425	5,560	10.9	341	610	1,632	2,977								
Brain	C70-72	8,706	10.1	4,942	10.1	1,021	10.1	844	1,439	1,638	3,764	7.4	692	596	1,034	1,442								
Thyroid	C73	13,089	6.6	3,249	6.6	1,082	6.6	703	779	685	9,840	19.4	3,545	2,364	2,227	1,704								
Hodgkin lymphoma	C81	4,028	4.5	2,185	4.5	1,338	4.5	293	299	255	1,843	3.6	1,253	182	212	196								
Non-Hodgkin lymphoma	C82-85,96	19,214	21.7	10,650	21.7	2,078	21.7	1,715	2,895	3,962	8,564	16.9	1,356	1,289	2,331	3,588								
SLL/CLL	M9670,9823	4,932	6.2	3,058	6.2	123	6.2	347	1,018	1,570	1,874	3.7	64	247	571	992								

(Continues)

TABLE 1 (Continued)

Cancer type	ICD10/ICDO3	BOTH SEXES		MEN						WOMEN					
		N	Age 15-74 years	Age 15-74 years		Age 15-74 years		Age 15-74 years		Age 15-74 years		Age 15-74 years		Age 15-74 years	
				CIR	N	15-44	45-54	55-64	65-74	N	CIR	N	15-44	45-54	55-64
NHL, diffuse large B	M9678-9684	4,982	2,811	5.7	659	457	686	1,009	2,171	4.3	423	301	490	957	
NHL, follicular	M9675,9690-9698	3,116	1,493	3.0	298	313	432	450	1,623	3.2	248	282	527	566	
Acute myeloid leukaemia	M9840,9861,9866-9867,9870-9874,9891-9931	3,377	1,804	3.7	332	248	457	767	1,573	3.1	321	222	403	627	
Multiple myeloma	M9731-9734	6,669	3,536	7.2	164	468	1,125	1,779	3,133	6.2	132	396	929	1,676	
All types	C00-43,45-96, D090, D303, D414	508,617	281,687	573.7	19,400	32,524	87,862	141,901	226,930	446.8	30,425	43,823	65,414	87,268	

^aCancer Registries with ≥ 18 years of observation, age 15-74 years; Cancer type or subtype with >2000 cases in the period and areas covered by CRs.

2011 (ie, Ferrara, Genova, Modena, Parma, Ragusa, Sassari, Varese, and Veneto, representing 10% of the entire Italian population in 2010).^{11,17}

The study included all malignant tumors (ICD-10: C00-C43, C45-C96), and those with benign/uncertain behavior or in situ bladder cancers. Nonmelanoma skin cancers (ICD-10 C44) were excluded. ICD-O-3 classification was used to identify subtypes (Table 1).

The observed relative survival (RS) was calculated for adult cases (aged 15-74 years) diagnosed in 1985-2011 and followed-up until 2013, using the cohort method and the Ederer II approach.^{4,12}

Indicators of long-term survival and cancer cure were obtained by applying, for each combination of cancer type and sex, mixture cure models to RS data, stratified by age groups (15-44, 45-54, 55-64, 65-74 years), and three-year diagnostic periods (ie, 1985-1987, 1988-1990..., 2009-2011).^{18,19} Only cancer types (first two ICD10 digits, or ICDO3 groups for hemopoietic neoplasms) with at least 2 000 adult cases recorded in the Italian registries in 1985-2011 were considered (Table 1).

The three indicators of long-term survival and cancer cure for Italian patients were defined as follows: (a) median life expectancy of fatal tumors (LEFT), reached when 50% of patients with a fatal tumor had died¹⁸; (b) the proportion of cancer patients expected to reach the same death rates of the general population of the same sex and age (cure fraction, CF)^{4,18,20}; and (c) the number of years after cancer diagnosis necessary to eliminate, or at least to make negligible, the excess mortality due to cancer (time to cure, TTC).^{4,6}

From a statistical and epidemiological point of view, CF is reached when the cancer specific excess mortality approaches zero and patients will die of causes other than that neoplasm.²¹ Given the conditional relative survival (CRS) as the survival experience of the cohort alive n years after the diagnosis of a specific cancer, the TTC was measured as the number of years necessary for model-based 5-year CRS to reach 90% or 95%, two clinically or epidemiologically relevant thresholds of fading cancer excess mortality.^{4,6}

For most cancer types, a Weibull distribution was used to model the excess mortality function for fatal cases (ie, those who will never reach the same death rates of the general population). For breast cancer in women, bladder and thyroid cancers, and Hodgkin lymphoma a better fit was obtained by using an exponential distribution. All models were stratified by age, assuming linearity in the period of diagnosis effects.¹⁸ Changes of LEFT and CF over time were calculated accordingly for two periods of diagnosis (1990 and 2000).

The goodness of fit of model-based RS was evaluated using the likelihood ratio test and cure models converged

TABLE 2 Median life expectancy of fatal tumors by cancer type, sex, and period in Italy

Year of diagnosis	MEN				WOMEN			
	1990	2000	Variation		1990	2000	Variation	
Cancer type	years	years	years	%	years	years	years	%
Oral cavity and pharynx	1.9	2.2	0.36	19%	3.8	4.2	0.42	11%
Esophagus	0.6	0.7	0.15	26%	0.7	0.8	0.13	19%
Stomach	0.6	0.7	0.11	17%	0.7	0.8	0.06	9%
Colon	1.4	1.6	0.14	10%	1.5	1.6	0.12	8%
Rectum	2.0	2.2	0.21	10%	1.9	2.1	0.19	10%
Liver	0.4	0.7	0.32	80%	0.5	0.8	0.34	69%
Gallbladder	0.4	0.6	0.12	27%	0.4	0.4	0.10	27%
Pancreas	0.3	0.4	0.09	29%	0.4	0.5	0.11	29%
Larynx	10.9	10.8	-0.10	-1%	10.1	13.6	3.50	35%
Lung	0.5	0.6	0.09	16%	0.5	0.7	0.16	29%
Skin melanoma	2.5	2.8	0.33	13%	4.3	4.6	0.27	6%
Mesothelioma	0.9	1.0	0.12	13%	1.0	1.1	0.09	10%
Connective tissue	2.2	2.4	0.13	6%	2.0	2.1	0.15	8%
Breast ^c					8.1	9.4	1.38	17%
Cervix uteri					2.4	2.5	0.09	4%
Corpus uteri					3.9	4.0	0.10	3%
Ovary					1.8	2.0	0.23	13%
Prostate	5.2	7.4	2.21	42%				
Testicular ^b	5.8	6.1	0.22	4%				
Kidney	8.5	>15	-	-	3.2	4.2	0.96	30%
Bladder ^c	4.3	4.7	0.44	10%	3.3	3.5	0.21	6%
Brain	0.5	0.6	0.11	24%	0.4	0.6	0.14	31%
Thyroid ^b	3.6	3.7	0.08	2%	4.6	4.6	0.02	0%
Hodgkin lymphoma ^b	6.3	6.6	0.30	5%	6.9	7.5	0.61	9%
Non-Hodgkin lymphoma	3.1	5.0	1.94	63%	5.4	9.7	4.35	81%
SLL/CLL ^d	3.6	3.6	0.04	1%	5.1	4.9	-0.21	-4%
NHL, diffuse large B	0.9	1.2	0.27	29%	1.8	2.1	0.38	22%
NHL, follicular	6.6	11.8	5.25	80%	6.6	12.90	6.28	95%
Acute myeloid leukaemia	0.3	0.5	0.18	40%	0.3	0.5	1.01	28%
Multiple myeloma	3.0	4.2	1.19	66%	3.7	4.7	0.19	57%
All types	1.0	1.4	0.41	40%	2.3	2.7	0.46	20%

^aCalculated as the median (50th percentile) relative survival, estimated through the best fitting model-based distributions. Patients aged 15-74 years, except when specified.

^bPatients aged 15-44 years.

^cPatients aged 65-74 years.

^dPatients aged 55-74 years.

for every cancer type and sex. In addition, a comparison of observed and model-based RS and 5-year CRS was conducted²² until 25 years after diagnosis for all cancer types, sex, age groups, and period of diagnosis (Appendices S1 and S2). The model fitting to observed RS was good with few exceptions for cancer types with a very poor long-term survival. For these cancers, inconsistencies between the observed and model-based CRS emerged. Therefore, TTC

were presented only for cancer types with a CF >20% in men or women.

3 | RESULTS

More than half a million Italian cancer patients aged 15-74 years in 1985-2011 (281 687 men and 226 930 women)

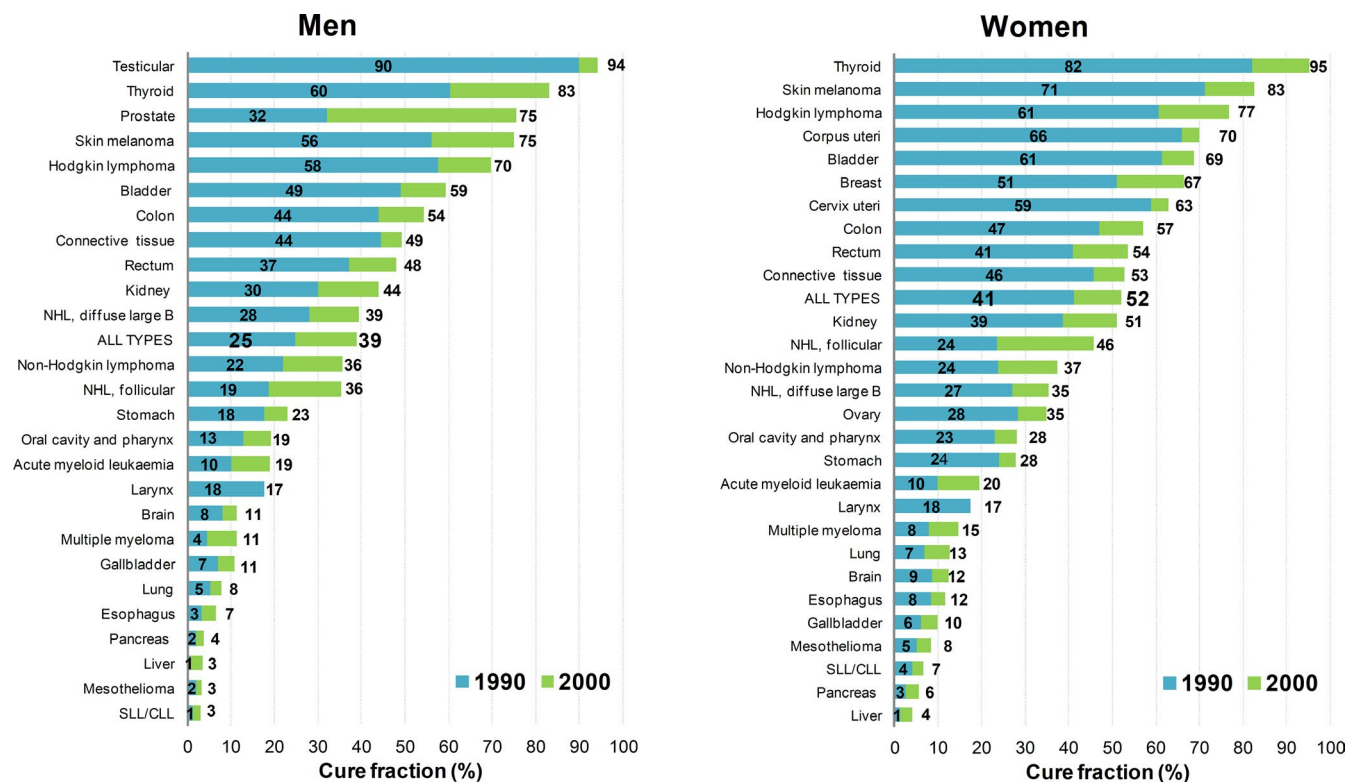


FIGURE 1 Estimated cure fraction (%)^a by sex, cancer type, and year of diagnosis in Italy. ^aCalculated as weighted means of corresponding cure fractions for the four age groups (Appendix S4) with the number of incident cases as weights. Patients aged 15-74 years

contributed to the study (Table 1), 79 608 women with breast cancer, 62 608 cases with lung, 43 623 with prostate, and 41 089 with colon cancers.

In 1990 and in both sexes, the median LEFT was less than half a year for patients with liver, gallbladder, pancreas, lung, brain cancers, and with acute myeloid leukemias (Table 2). Conversely, a median LEFT longer than five years was estimated -in 1990- for cancers of the larynx (>10 years), breast (8.1), prostate (5.2), and follicular lymphomas (6.6). They were 5.8 years for testicular cancer, and 6.3 years in men and 6.9 years in women with Hodgkin lymphoma diagnosed below age 45 years (ie, the vast majority of cases).

Between 1990 and 2000, the median LEFT increased by more than one year for patients with breast (from 8.1 to 9.4 years) or prostate cancer (from 5.2 to 7.4 years), and -in both sexes- non-Hodgkin lymphoma (NHL), in particular follicular NHL. Conversely, a limited (ie, <2 months) increase was estimated for stomach, colon, gallbladder, pancreas, lung, cervix and corpus uteri, brain, thyroid cancers and small lymphocytic lymphoma/chronic lymphocytic leukemia (SLL/CLL). For most cancer types, the median LEFT slightly decreased with age (Appendix S3).

For cancer cases diagnosed in 2000, the CF was 39% for the combination of all cancer types (ie, weighted by the number of cases by type and age) in men (Figure 1). CF was >50% for patients with testicular cancers (94%), thyroid (83%), prostate (75%), skin melanoma (75%),

Hodgkin lymphoma (70%), bladder (59%) or colon cancers (54%). In women, the CF for all cancers was 52%, the highest CF was estimated for thyroid cancer (95%), skin melanoma (83%), Hodgkin lymphoma (77%), corpus uteri (70%), bladder (69%), and breast cancer (67%). Conversely, for cases diagnosed until 2000, a CF <10% was estimated in both sexes for cancers of the liver and pancreas, mesothelioma, and SLL/CLL. The CF increased approximately 10 percentage points between 1990 and 2000 for most common cancer types (ie, colon and rectum, breast or bladder cancer), and across most age groups (Appendix S4). Notably, a nearly doubled CF emerged in Italy for prostate cancers between 1990 and 2000, while only a limited (<5%) increase was observed for the most fatal cancer types. A marked CF decrease emerged with age (Appendix S4).

Table 3 shows the observed number of patients alive at 10 years since diagnosis, the observed 5-year CRS for patients alive 10 years after diagnosis, and the estimated number of years necessary for model-based 5-year CRS to exceed 90% or >95%. Men and women who already survived 10 years showed an observed 5-year CRS >95% in all age groups when the diagnoses were colon cancer, skin melanoma, testicular and thyroid cancers (94% in 65-74 years men). Patients with these cancer types indeed reached 5-year CRS >95% in less than 10 years (Table 3). Notably, TTC (with 95% threshold for 5-year CRS) was reached in

TABLE 3 Indicators of time to cure^a by sex, cancer type^b, and age in Italy

Age (y)	15-44			45-54			55-64			65-74						
	Observed		5/10	Observed		5/10	Observed		5/10	Observed		5/10				
	At 10 y	CRS	>90%	Years to 5-y CRS ^c	>95%	CRS	At 10 y	CRS	>90%	Years to 5-y CRS ^c	>95%	CRS				
MEN																
Oral cavity and pharynx	247	85%	13	18	485	82%	15	20	615	79%	16	>20	343	76%	17	>20
Stomach	163	97%	6	9	360	97%	6	8	658	97%	7	9	701	89%	11	16
Colon	349	99%	5	7	913	99%	5	7	2,204	97%	6	8	2,725	97%	6	9
Rectum	148	96%	7	9	476	98%	6	8	1,059	94%	8	11	1,177	94%	8	11
Skin melanoma	820	99%	4	6	597	96%	5	9	643	98%	5	8	472	98%	6	8
Connective tissue	158	96%	6	10	127	94%	7	12	134	93%	9	13	90	91%	10	14
Prostate	17	93%	6	14	575	92%	7	15	4,636	92%	8	16	8,719	91%	9	17
Testicular	1,601	99%	<1	<1	251	100%	<1	<1	89	98%	1	1	23	94%	9	11
Kidney	398	96%	2	7	762	93%	6	17	1,481	91%	9	>20	1,294	88%	14	>20
Bladder	630	98%	<1	1	1,605	95%	3	11	3,644	92%	9	16	4,347	90%	11	16
Thyroid	506	100%	<1	<1	276	96%	<1	7	255	97%	6	9	145	94%	8	11
Hodgkin lymphoma	792	97%	0	7	130	93%	7	15	101	80%	>20	>20	52	86%	12	16
Non-Hodgkin lymphoma	889	91%	8	>20	678	89%	12	>20	851	87%	15	>20	742	85%	19	>20
NHL, diffuse large B	235	99%	4	6	151	95%	7	10	156	88%	12	>20	141	88%	12	19
NHL, follicular	160	92%	3	>20	134	88%	20	>20	137	83%	>20	>20	100	76%	>20	>20
WOMEN																
Oral cavity and pharynx	159	89%	12	>20	179	85%	16	>20	227	83%	19	>20	263	80%	>20	>20
Stomach	120	99%	5	6	215	97%	7	9	430	97%	6	8	574	93%	9	13
Colon	344	100%	5	6	893	98%	5	7	1,993	98%	5	7	2,593	97%	6	8
Rectum	125	99%	5	7	363	97%	7	9	757	98%	6	8	880	96%	7	10
Skin melanoma	1,281	97%	<1	6	703	98%	2	6	697	96%	2	8	575	95%	6	10
Connective tissue	141	97%	5	9	89	96%	7	10	125	95%	7	11	92	94%	8	12
Breast	5,785	92%	9	14	10,663	94%	5	12	11,539	92%	8	17	9,712	89%	12	>20
Cervix uteri	858	99%	3	6	589	100%	4	6	511	93%	8	13	349	90%	11	16
Corpus uteri	355	96%	1	7	1,443	99%	1	4	2,395	95%	3	11	1,842	94%	6	11
Ovary	544	97%	5	9	558	94%	9	11	558	91%	10	13	362	93%	9	12
Kidney	214	100%	3	5	365	95%	4	11	684	92%	7	19	779	91%	10	>20

(Continues)

TABLE 3 (Continued)

Age (y)	15-44		45-54		55-64		65-74	
	Observed	Years to 5-y CRS ^c	Observed	Years to 5-y CRS ^c	Observed	Years to 5-y CRS ^c	Observed	Years to 5-y CRS ^c
SEX, Cancer type	5/10 At 10 y	>90%	5/10 At 10 y	>90%	5/10 At 10 y	>95%	5/10 At 10 y	>95%
Bladder	218	100%	330	99%	821	95%	1,126	94%
Thyroid	1,803	100%	1,111	99%	937	99%	560	98%
Hodgkin lymphoma	750	97%	104	95%	94	85%	55	77%
Non-Hodgkin lymphoma	644	93%	590	91%	897	88%	889	85%
NHL, diffuse large B	160	98%	110	92%	139	87%	166	83%
NHL, follicular	128	95%	138	91%	198	87%	163	81%

^aPatients alive at 10 years since diagnosis (At 10 y), observed 5-year Conditional Relative Survival (CRS) for patients alive 10 years after diagnosis (5/10 CRS), and years to reach 5-year Conditional Relative Survival (years to 5-y CRS) >90% or >95%.

^bCancer types with CF >20% in men or women.

^cModel-based 5-year CRS centered in 1995.

less than 1 year for thyroid cancer patients below the age of 55 years. Conversely, a small but non negligible excess risk of death was still present even after 15 years since diagnosis for women with breast cancer and men with prostate and bladder cancers. In both sexes, a clear long-term excess risk of death emerged for most smoking-related cancers (Appendices S1 and S2), and for hemolymphopoietic neoplasms, except for Hodgkin lymphoma (Table 3).

Figure 2 shows CF and TTC for major cancer types with CF >20%. Major patterns of cancer types emerged. The first included cancers with a CF >80% and a TTC ≤5-6 years (eg, testicular, thyroid, skin melanoma); the second, cancers with a CF of approximately 50% and a TTC <10 years (colon, rectum); the third, cancers showing a CF of approximately 50% and TTC >10 years (breast, prostate, and bladder). In addition, the most severe pattern included some cancer types with a CF <20% (Figure 1) and uncertain TTC.

4 | DISCUSSION

This study provided updated estimates of three relevant indicators of long-term survival and cancer cure for Italian patients, which are still lacking in current cancer statistics.

The median LEFT increased 4-5 months in both sexes between 1990 and 2000, with noteworthy variations across cancer types. Patients who died of prostate cancer had 2-year longer median LEFT when diagnosed in 2000 (7.4 years), as compared to those diagnosed in 1990 (5.2). A similar increase emerged for breast cancer (from 8.1 to 9.4), while the median LEFT showed a small increase (<2 months) for colon, rectal or lung cancers. In the same decade, an approximately 10% increase in CF was estimated for adult patients and, notably this increase was consistent across cancer types.

Our results, along with the findings from similar studies,⁵⁻¹⁰ supported the characterization of four major patterns of cancer types which may correspond to specific follow-up strategies. The less severe characterization included cancer types with 5-year RS and CF >80% (eg, testicular and thyroid cancers below age 55 years). For these good prognosis cancers less intense surveillance scheme may be warranted, because after one or two years since diagnosis no relevant excess mortality remained.^{6,9,10} Excess mortality became negligible in less than 10 years for patients below age 45 years with Hodgkin lymphoma, skin melanoma, and cervical cancer.^{6,23}

A second group included cancer types with negligible excess risk of death within 10 years from diagnosis (eg, colorectal and younger patients with stomach cancer). For these cancers, however, only medium or low CFs have been reported (approximately 50% and 20%, respectively).^{5,6,9,10}

In the third group, including women with breast cancer, despite dramatic improvements in survival over the past decades,

a small (ie, 5-year CRS <10%) but persistent (for >15 years) increased death risk was observed.^{8,10,20,24-26} It should be noted, however, that less than half the women with breast cancer will die because of that cancer in the first 20 years following diagnosis (ie, 20-year RS >50%, Appendix S2).^{27,28} A very similar pattern emerged for patients with prostate and bladder cancers, for which a long follow-up is needed.

The last group included cancer types showing 5-year RS <20% (eg, lung or pancreatic cancer),^{5,7,9,10} whose patients in this group may hardly reach the same expected death rate of the general population, because of the severe prognoses of these specific neoplasms, and the competitive risks associated with lifestyle risk factors. In particular, a vast majority of respiratory tract cancer patients are smokers who carry a high risk of smoking-related mortality.²⁹ A similar excess of noncancer related mortality is expected for people infected with hepatitis C virus, a large proportion of liver cancer patients. These effects could result in reduced long-term RS and in prolonged or indefinite TTC.

4.1 | Strengths and limitations

To the best of our knowledge, this is the first study reporting trends of LEFT and CF for a large number of cancer types. In addition, in this study a careful validation was conducted by comparing observed RS, 5-years CRS, and the corresponding model-based curves by follow-up time to 25 years after diagnosis (Appendices S1 and S2). The accuracy of the present estimates relied on the length of follow-up and size of the study population. The follow-up period appeared long enough to provide reliable estimates of median LEFT, CF, and TTC for several cancer types.³⁰ Indeed, our survival estimates were based on a very large population-based cohort of patients, which allowed estimates by some relevant histological subtype (ie, diffuse large-B-cell and follicular NHL, and SLL/CLL or acute myeloid leukemias).

A first limitation is related to the representativeness of our results at the national level, since the long-established cancer registries contributing to this study cover only 10% of the Italian population. Variability across regions of present indicators cannot be excluded, although cancer registries were well distributed across all Italian areas.¹¹ Moreover, the generalization of results to other countries, herein presented, is also uncertain albeit the Italian survival levels were similar to those of most central and southern European countries.¹² Additional limitations are related to the use of cure models.^{22,31} These models are influenced by the choice of the survival distribution of fatal tumors. Most importantly, the estimates are critical for cancers maintaining a long-term excess mortality risk because the follow-up period available may not be sufficient to observe the deaths of all fatal cases, ie the plateau in the survival curve. This means that there might have been an identifiability issue of the CF and LEFT.^{5,22} Moreover, it should be noted that the estimation of TTC is sensible to the choice of the CRS threshold and to the use of different definitions,^{4,6,10} in particular for prostate or breast cancer in women. To take into account these critical points, we validated all models in addition to provide observed 5-year CRS estimates at a fixed time point (10 years after diagnosis) and of TTC at different thresholds (ie, 90% and 95%).^{4,6} Finally, information on other important prognostic factors (ie, stage and treatment) is not routinely collected by Italian CRs, and population-based studies with a long follow-up can hardly allow fine stratifications to assess long-term survival, or cure of small subgroups of patients exposed to fast-changing therapies.

5 | CONCLUSIONS

Our study confirmed, between 1990 and 2000 a general improvement of prognosis and cure of adult Italian cancer

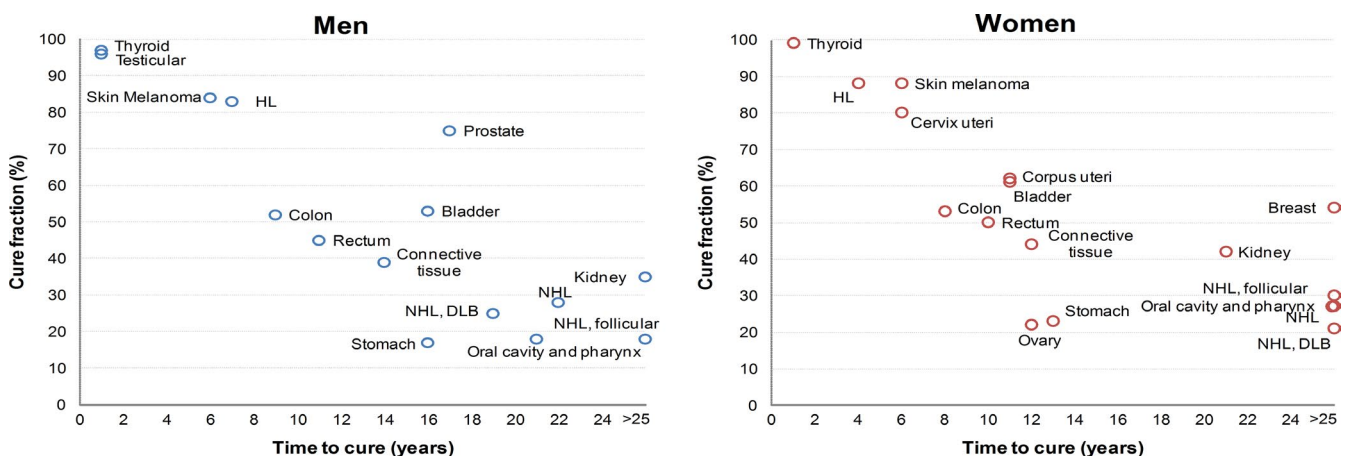


FIGURE 2 Cure fraction (%) and time to cure^a by sex for selected cancer types^b in Italy. ^aCalculated in 2000 for the most frequent age group (Table 3 and Appendix S4), that is, 65-74 years but Connective Tissue, Cervix uteri, Testis, Thyroid, and Hodgkin lymphoma (15-44 years).

^bCancer types with CF >20% in men or women

patients, measured here in terms of cure fraction and of life expectancy of fatal cases. The findings highlighted a 10% average increase of cure fraction for adult Italian cancer patients, and a 4-5 months increase of median LEFT in a decade. Excess cancer mortality risk disappeared in <10 years for testicular, thyroid, colon cancers, and melanoma, while it remained for >15 years for breast and prostate cancers.

Detailed (eg, by sex, age, year of diagnosis) estimates of different indicators of long-term survival and cancer cure are useful to health professionals in enhancing the efficacy of long-term follow-up, a goal which can be reached through appropriate tools and procedures.^{14,32,33}

In conclusion, recognizing a cancer patient as cured, and quantifying his/her long-term excess risk of death, represents a valuable opportunity to improve his/her quality of life^{34,35} and social or professional perspectives, as well.⁸

ETHICS APPROVAL AND CONSENT TO PARTICIPATE

The Italian legislation identifies Cancer Registries as collectors of personal data for surveillance purposes without explicit individual consent. The approval of a research ethics committee was not required, since this study is a descriptive analysis of individual data without any direct or indirect intervention on patients (Decreto del Presidente del Consiglio dei Ministri, 3/3/2017, Identificazione dei sistemi di sorveglianza e dei registri di mortalità, di tumori e di altre patologie, 17A03142, GU Serie Generale n.109 del 12-05-2017 (Available at: <http://www.gazzettaufficiale.it/eli/id/2017/05/12/17A03142/sg>, last access: 10/10/2018).

ACKNOWLEDGEMENTS

We thank Mrs Luigina Mei for editorial assistance.

DISCLOSURE

The authors have declared no conflicts of interest.

AUTHOR'S CONTRIBUTIONS

Luigino Dal Maso and Stefano Guzzinati drafted the study protocol, designed the study, and drafted the manuscript with the support of Roberta De Angelis. All authors (Luigino Dal Maso, Chiara Panato, Stefano Guzzinati, Diego Serraino, Silvia Francisci, Laura Botta, Riccardo Capocaccia, Andrea Tavilla, Anna Gigli, Emanuele Crocetti, Massimo Rugge, Giovanna Tagliabue, Rosa Angela Filiberti, Giuliano Carrozzi, Maria Michiara, Stefano Ferretti, Rosaria Cesaraccio, Rosario Tumino, Fabio Falcini, Fabrizio Stracci, Antonietta Torrisi, Guido Mazzoleni, Mario Fusco, Stefano Rosso, Francesco Tisano, Anna Clara Fanetti, Giovanna Maria Sini, Carlotta

Buzzoni, Roberta De Angelis) and the AIRTUM Working Group revised the study protocol, collected data, prepared raw data for the study database, and corrected data after quality controls. Chiara Panato did the statistical analyses with the support of Stefano Guzzinati, Laura Botta, Andrea Tavilla, and Luigino Dal Maso. Diego Serraino, Silvia Francisci, Riccardo Capocaccia, Anna Gigli, Emanuele Crocetti, and Roberta De Angelis specifically supported Luigino Dal Maso in the interpretation and discussion of clinical implication of study results. All authors revised the preliminary results and the report, and contributed to data interpretation, report writing, and reviewed and approved the final version.

DATA AVAILABILITY STATEMENT

Dataset supporting our findings is available, according to AIRTUM guidelines, at the following website: www.regis-tri-tumori.it.

ORCID

Luigino Dal Maso  <https://orcid.org/0000-0001-6163-200X>

REFERENCES

- Guzzinati S, Virdone S, De Angelis R, et al. Characteristics of people living in Italy after a cancer diagnosis in 2010 and projections to 2020. *BMC Cancer*. 2018;18:169.
- de Moor JS, Mariotto AB, Parry C, et al. Cancer survivors in the United States: prevalence across the survivorship trajectory and implications for care. *Cancer Epidemiol Biomarkers Prev*. 2013;22:561-570.
- Maddams J, Utley M, Møller H. Projections of cancer prevalence in the United Kingdom, 2010–2040. *Br J Cancer*. 2012;107:1195-1202.
- Dal Maso L, Guzzinati S, Buzzoni C, et al. Long-term survival, prevalence, and cure of cancer: a population-based estimation for 818902 Italian patients and 26 cancer types. *Ann Oncol*. 2014;25:2251-2260.
- Francisci S, Capocaccia R, Grande E, et al. The cure of cancer: a European perspective. *Eur J Cancer*. 2009;45:1067-1079.
- Janssen-Heijnen M, Gondos A, Bray F, et al. Clinical relevance of conditional survival of cancer patients in Europe: Age-specific analyses of 13 cancers. *J Clin Oncol*. 2010;28:2520-2528.
- Cvancarova M, Aagnes B, Fosså SD, Lambert PC, Møller B, Bray F. Proportion cured models applied to 23 cancer sites in Norway. *Int J Cancer*. 2013;132:1700-1710.
- Dumas A, De Vathaire F, Vassal G. Access to loan-related insurance for French cancer survivors. *Lancet Oncol*. 2016;17:1354-1356.
- Silversmit G, Jegou D, Vaes E, Van Hoof E, Goetghebeur E, Van Eycken L. Cure of cancer for seven cancer sites in the Flemish Region. *Int J Cancer*. 2017;140:1102-1110.
- Boussari O, Romain G, Remontet L, et al. A new approach to estimate time-to-cure from cancer registries data. *Cancer Epidemiol*. 2018;53:72-80.

11. AIRTUM Working Group. Italian cancer figures, report 2016. Survival of cancer patients in Italy. *Epidemiol Prev.* 2017;41(2 Suppl 1):1-244.
12. De Angelis R, Sant M, Coleman MP, et al. Cancer survival in Europe 1999–2007 by country and age: results of EUROCARE-5-a population-based study. *Lancet Oncol.* 2014;15:23-34.
13. Laudicella M, Walsh B, Burns E, Smith PC. Cost of care for cancer patients in England: evidence from population-based patient-level data. *Br J Cancer.* 2016;114:1286-1292.
14. Tralongo P, McCabe MS, Surbone A. Challenge for cancer survivorship: improving care through categorization by risk. *J Clin Oncol.* 2017;35:3516-3517.
15. Dood RL, Zhao Y, Armbruster SD, et al. Defining survivorship trajectories across patients with solid tumors: an evidence-based approach. *JAMA Oncol.* 2018;4(11):1519. <https://doi.org/10.1001/jamaoncol.2018.2761>.
16. Dumas A, Allodji R, Fresneau B, et al. The right to be forgotten: a change in access to insurance and loans after childhood cancer? *J Cancer Surviv.* 2017;11:431-437.
17. Bray F, Colombet M, Mery L, et al., eds. Cancer incidence in five continents. Vol. XI (electronic version). Lyon, IARC; 2017. <http://ci5.iarc.fr>. Accessed June 15, 2018.
18. De Angelis R, Capocaccia R, Hakulinen T, Soderman B, Verdecchia A. Mixture models for cancer survival analysis: application to population-based data with covariates. *Stat Med.* 1999;18:441-454.
19. Merrill RM, Capocaccia R, Feuer EJ, Mariotto A. Cancer prevalence estimates based on tumour registry data in the Surveillance, Epidemiology, and End Results (SEER) program. *Int J Epidemiol.* 2000;29:197-207.
20. Andersson T, Lambert PC, Derolf AR, et al. Temporal trends in the proportion cured among adults diagnosed with acute myeloid leukemia in Sweden 1973–2001, a population-based study. *Br J Haematol.* 2009;148:918-924.
21. Zaorsky NG, Churilla TM, Egleston BL, et al. Causes of death among cancer patients. *Ann Oncol.* 2017;28:400-407.
22. Yu XQ, De Angelis R, Andersson TM, Lambert PC, O'Connell DL, Dickman PW. Estimating the proportion cured of cancer: some practical advice for users. *Cancer Epidemiol.* 2013;37:836-842.
23. Andrae B, Andersson TM, Lambert PC, et al. Screening and cervical cancer cure: population based cohort study. *BMJ.* 2012;344:e900. <https://doi.org/10.1136/bmj.e900>.
24. Janssen-Heijnen M, van Steenbergen LN, Voogd AC, et al. Small but significant excess mortality compared with the general population for long-term survivors of breast cancer in the Netherlands. *Ann Oncol.* 2014;25:64-68.
25. Woods LM, Morris M, Rachet B. No 'cure' within 12 years of diagnosis among breast cancer patients who are diagnosed via mammographic screening: women diagnosed in the West Midlands region of England 1989–2011. *Ann Oncol.* 2016;27:2025-2031.
26. Pan H, Gray R, Braybrooke J, et al. 20-Year risks of breast-cancer recurrence after stopping endocrine therapy at 5 years. *N Engl J Med.* 2017;377:1836-1846.
27. Janssen-Heijnen ML, Houterman S, Lemmens VE, Brenner H, Steyerberg EW, Coebergh JW. Prognosis for long-term survivors of cancer. *Ann Oncol.* 2007;18:1408-1413.
28. SEER Cancer Statistics Review 1975-2014. https://seer.cancer.gov/archive/csr/1975_2014/results_merged/sect_04_breast.pdf.
29. Hinchliffe SR, Rutheford MJ, Crowter MJ, Nelson CP, Lambert PC. Should relative survival be used with lung cancer data. *Br J Cancer.* 2012;106:11854-11859.
30. Tai P, Yu E, Cserni G, et al. Minimum follow-up time required for the estimation of statistical cure of cancer patients: verification using data from 42 cancer sites in the SEER database. *BMC Cancer.* 2005;5:48.
31. Stedman MR, Feuer EJ, Mariotto AB. Current estimates of the cure fraction: a feasibility study of statistical cure for breast and colorectal cancer. *J Natl Cancer Inst Monogr.* 2014;2014:244-254.
32. Surbone A, Annunziata MA, Santoro A, Tirelli U, Tralongo P. Cancer patients and survivors: changing words or changing culture? *Ann Oncol.* 2013;24:2468-2471.
33. Shapiro CL. Cancer survivorship. *N Engl J Med.* 2018;379:2438-2450.
34. Husson O, Haak HR, Oranje WA, Mols F, Reemst PH, van de Poll-Franse LV. Health-related quality of life among thyroid cancer survivors: a systematic review. *Clin Endocrinol.* 2011;75:544-554.
35. Rohan EA, Miller N, Bonner F, et al. Comprehensive cancer control: promoting survivor health and wellness. *Cancer Causes Control.* 2018;29(12):1277-1285.

SUPPORTING INFORMATION

Additional supporting information may be found online in the Supporting Information section at the end of the article.

How to cite this article: Dal Maso L, Panato C, Guzzinati S, et al; for AIRTUM Working group. Prognosis and cure of long-term cancer survivors: A population-based estimation. *Cancer Med.* 2019;8:4497–4507. <https://doi.org/10.1002/cam4.2276>

APPENDIX

AIRTUM WORKING GROUP

Saverio Virdone (CRO Aviano), Gemma Gatta (INT Milan), Manuel Zorzi (Veneto Cancer Registry-CR), Sandra Mallone (ISS Rome), Federica Toffolutti (Friuli Venezia Giulia CR), Antonio Giampiero Russo (Milano CR), Anna Luisa Caiazzo (Salerno CR), Lucia Mangone (Reggio Emilia CR), Walter Mazzucco (CR of Palermo and province), Fabio Pannozzo (Latina CR), Paolo Ricci (Mantova CR), Gemma Gola (Como CR), Giuseppa Candela (Trapani CR), Antonella Sutura Sardo (Catanzaro CR).